

# FLETCHERS

ESTATE AGENTS



**Antrobus Road, W4**

**£1,295,000**

A charming end of terrace three bedroom home in good condition throughout including a wider than average South facing rear garden with potential to extend to the side and loft to create a long term family home.





The ground floor includes two reception rooms with high ceilings and original features, an eat-in kitchen benefitting from plenty of natural light which leads through to a peaceful 'snug'/office and ground floor shower room.

The first floor has three well sized double bedrooms and a further bathroom. The house can be extended both into the loft, and into the side, which is wider than the normal footprint and could create a superb family/entertaining space subject to consents.

Being end of terrace, the house benefits from side access and the well kept south facing garden offers lots of privacy.

Sold with no onward chain.

Antrobus Road is superbly placed with an easy walk to both South Acton and Chiswick Park Stations with the wonderful array of boutiques, high street shops and restaurants on Chiswick High Road and Turnham Green Terrace just beyond.

- End Of Terrace • Victorian Features • Three Bedrooms •
- Two Bathrooms • Three Reception Rooms • Potential To Extend •

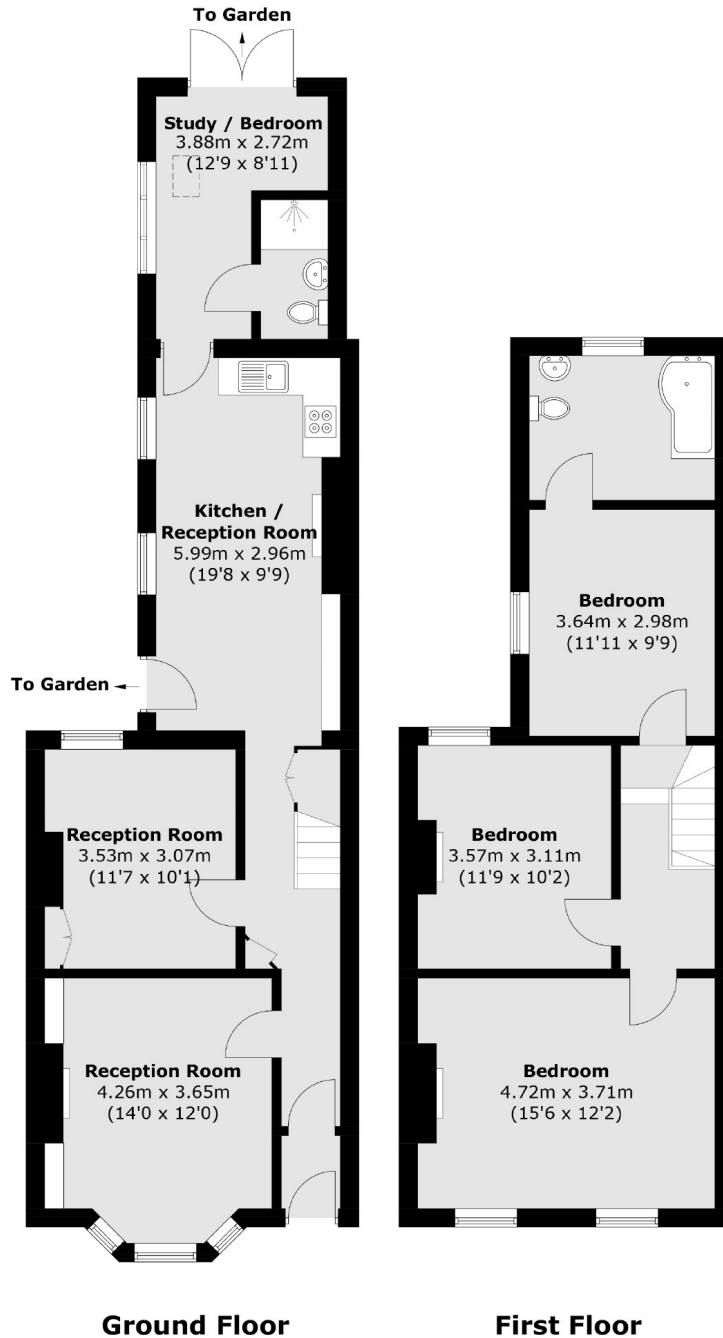






# FLETCHERS

ESTATE AGENTS



Total area (approx.): 120.9 sq. m (1,301.3 sq. ft)

Fletchers Chiswick Turnham Green Sales  
58 Turnham Green Terrace  
London  
W4 1QP  
020 8987 3000  
[chiswicksales@fletcherestates.com](mailto:chiswicksales@fletcherestates.com)

Energy Rating: D We aim to make our particulars both accurate and reliable. However they are not guaranteed; nor do they form part of an offer or contract. If you require clarification on any points then please contact us, especially if you're traveling some distance to view. Please note that appliances and heating systems have not been tested and therefore no warranties can be given as to their good working order