

# FLETCHERS

ESTATE AGENTS



## Bromyard Avenue, W3

£430,000

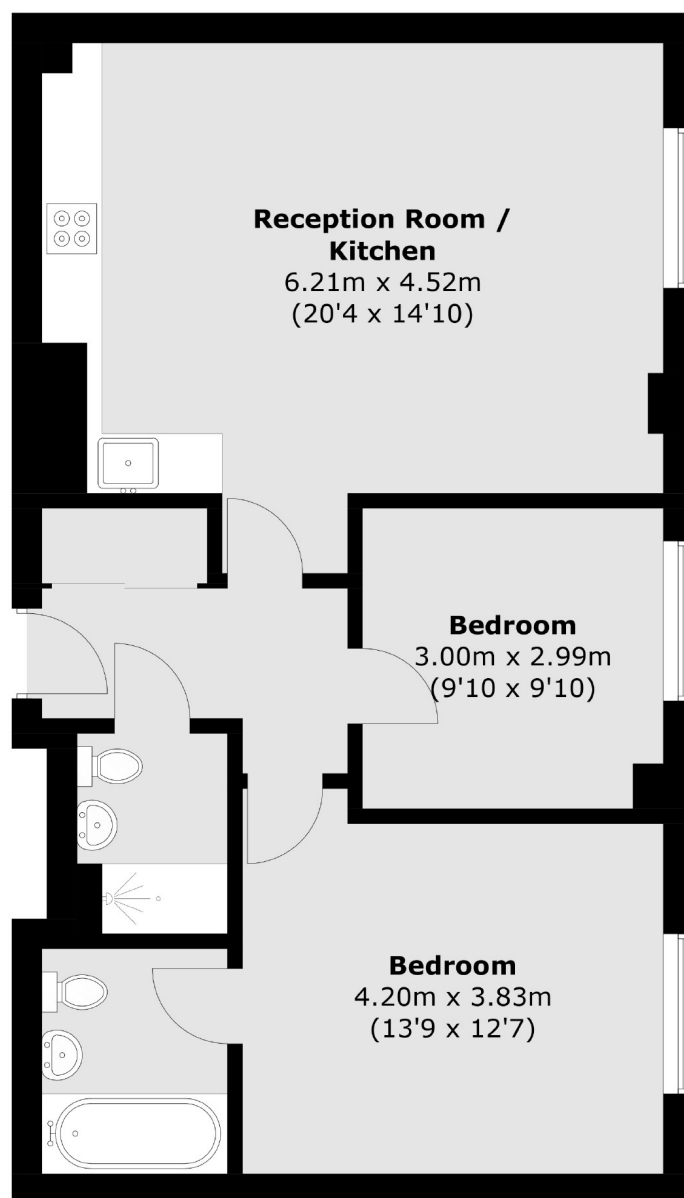
A large ground floor two bedroom, two bathroom flat conveniently located between Acton and Shepherds Bush. The development features very good security with fob-entrance into the building and secure underground allocated parking. For added security and convenience there is a 24 hour concierge office at the entrance to the development.

Bromyard House leads directly to Uxbridge Road with only a short bus ride to Shepherds Bush Market Underground station, and then onto the World Famous Westfield Shopping Centre with its incredible range of High Street and Designer brands, restaurants and entertainment facilities.

- Two Double Bedrooms • En-Suite Bathroom • Large Reception Room • Open-Plan Kitchen • Secure Underground Parking • 24 Hour Concierge •

# FLETCHERS

ESTATE AGENTS



Total area (approx.): 69.4 sq. m (747.0 sq. ft)

Fletchers Chiswick Turnham Green Sales  
58 Turnham Green Terrace, London, W4 1QP  
020 8987 3000  
[chiswicksales@fletcherestates.com](mailto:chiswicksales@fletcherestates.com)

Energy Rating: C. We aim to make our particulars both accurate and reliable. However they are not guaranteed; nor do they form part of an offer or contract. If you require clarification on any points then please contact us, especially if you're traveling some distance to view. Please note that appliances and heating systems have not been tested and therefore no warranties can be given as to their good working order.