

FLETCHERS

ESTATE AGENTS



Silver Crescent, W4

£630,000

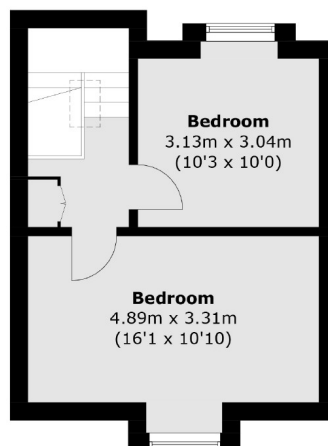
A well-appointed, two bedroom Victorian Maisonette, enviably located in the heart of Chiswick. The property benefits from its own private entrance and is located on the first and second floor. Additionally, the property retains many original period features and is being offered to the market with a chain free status.

Silver Crescent is a quiet tree-lined residential road, with all of the boutiques, cafés and restaurants of Chiswick High Road on the doorstep. The property's location provides easy access in and out of London via the A4/M4, with Gunnersbury Tube Station being only 300 meters away.

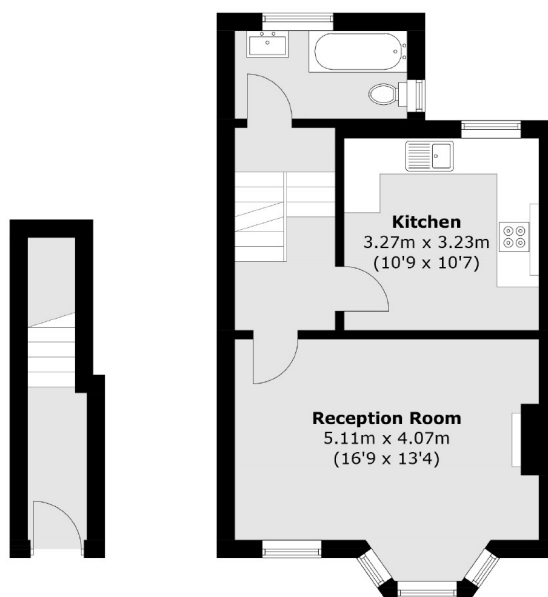
- Two Double Bedrooms • Victorian Maisonette • Private Entrance • Split Level • Period Features • Chain Free •

FLETCHERS

ESTATE AGENTS



Second Floor



Ground Floor

First Floor

Total area (approx.): 75.8 sq. m (815.9 sq. ft)

Fletchers Chiswick Turnham Green Sales
58 Turnham Green Terrace, London, W4 1QP
020 8987 3000
chiswicksales@fletcherestates.com

Energy Rating: D. We aim to make our particulars both accurate and reliable. However they are not guaranteed; nor do they form part of an offer or contract. If you require clarification on any points then please contact us, especially if you're traveling some distance to view. Please note that appliances and heating systems have not been tested and therefore no warranties can be given as to their good working order.