

# FLETCHERS

ESTATE AGENTS



## Abinger Road, W4

£1,050,000

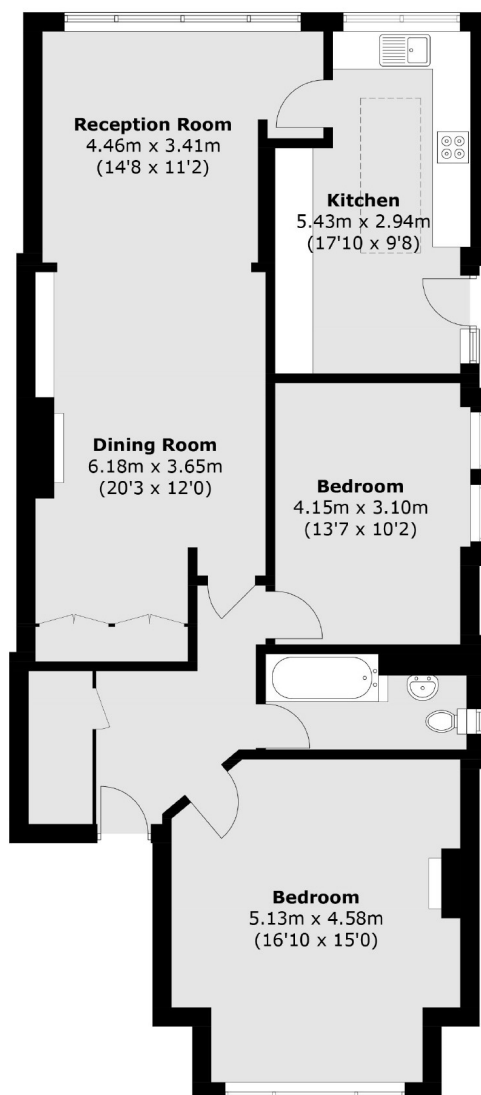
An extremely spacious ground floor garden flat, located in the heart of Bedford Park. This charming property has two double bedrooms, a generous double reception room, a modern kitchen and offered with no onward chain.

Abinger Road is in the heart of the Bedford Park Conservation Area and only a short walk from Turnham Green Terrace and Chiswick High Road; with all of its boutiques, cafés and restaurants.

- Garden Flat • Ground Floor • Two Bedrooms • Extremely Spacious • Period Features • Turnham Green Terrace •

# FLETCHERS

ESTATE AGENTS



Total area (approx.): 103.3 sq. m (1,111.9 sq. ft)

Fletchers Chiswick Turnham Green Sales  
58 Turnham Green Terrace, London, W4 1QP  
020 8987 3000  
[chiswicksales@fletcherestates.com](mailto:chiswicksales@fletcherestates.com)

Energy Rating: D. We aim to make our particulars both accurate and reliable. However they are not guaranteed; nor do they form part of an offer or contract. If you require clarification on any points then please contact us, especially if you're traveling some distance to view. Please note that appliances and heating systems have not been tested and therefore no warranties can be given as to their good working order.