

FLETCHERS

ESTATE AGENTS



Elliott Road, W4

£685,000

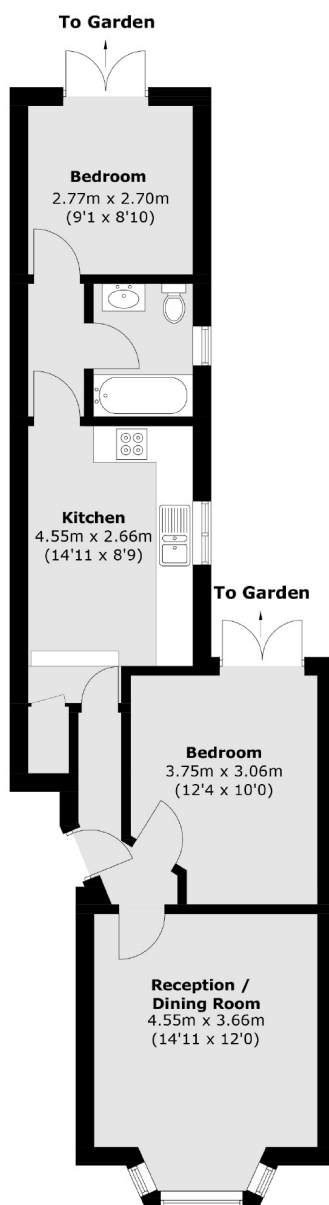
A superbly located bay fronted Victorian garden flat with two bedrooms, separate kitchen and a spacious landscaped West facing garden. There is a share in the freehold and further potential to extend to the side and rear subject to consents.

An ideal location in the heart of Chiswick, conveniently placed just off Chiswick High Road and Turnham Green Terrace and surrounded by amenities including boutique shops, restaurants and cafés. Turnham Green Station and Chiswick Common are just at the end of the street.

• Two Bedrooms • Victorian Conversion • West Facing Garden • Separate Kitchen • Period Features • Potential to Extend •

FLETCHERS

ESTATE AGENTS



Total area (approx.): 57.2 sq. m (615.7 sq. ft)

Fletchers Chiswick Turnham Green Sales
58 Turnham Green Terrace, London, W4 1QP
020 8987 3000
chiswicksales@fletcherestates.com

Energy Rating: C. We aim to make our particulars both accurate and reliable. However they are not guaranteed; nor do they form part of an offer or contract. If you require clarification on any points then please contact us, especially if you're traveling some distance to view. Please note that appliances and heating systems have not been tested and therefore no warranties can be given as to their good working order.