



## Clovelly Road, W4

£830,000

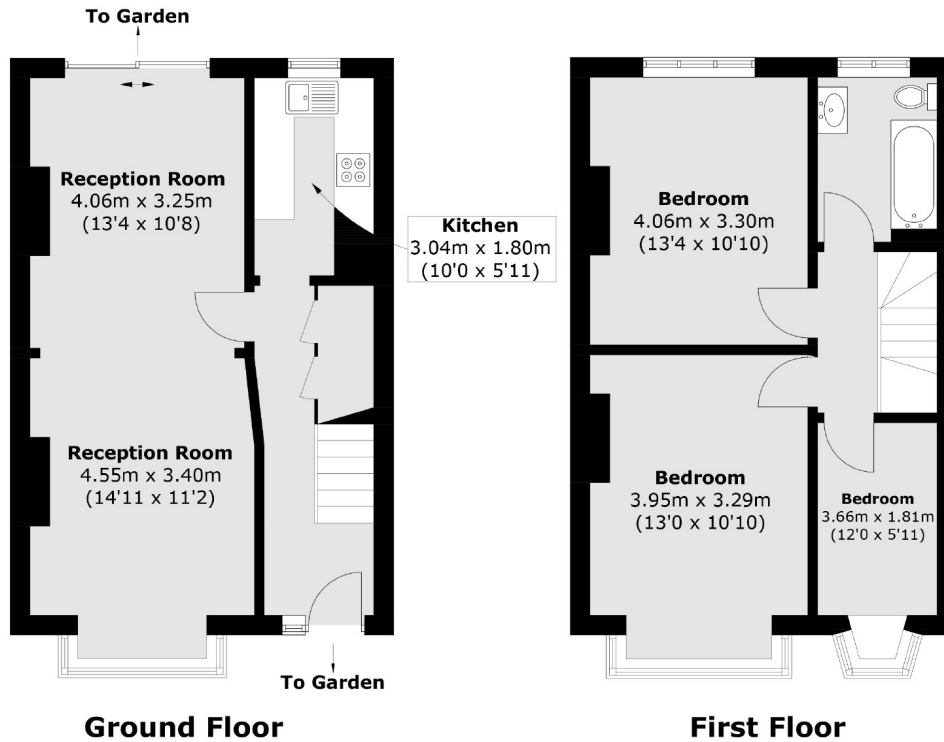
An opportunity to purchase a three bedroom family home with a South facing private garden and potential to extend on both the ground floor and into the loft space. There is a 28 foot long double reception room leading out to the garden with plenty of entertaining space. Sold with no onward chain.

In a popular residential area just North of Turnham Green and Chiswick High Road, both within walking distance and offering a brilliant selection of shops, restaurants and cafés. Within the catchment of Ofsted Outstanding rated Southfield School. Chiswick Park station offers District Line and South Acton offers an overground connection.

- Three Bedrooms • Separate Kitchen • Double Reception • South Facing Garden • No Onward Chain • Potential to Extend •

# FLETCHERS

ESTATE AGENTS



Total area (approx.): 89.0 sq. m (957.9 sq. ft)

Fletchers Chiswick Turnham Green Sales  
58 Turnham Green Terrace, London, W4 1QP  
020 8987 3000  
[chiswicksales@fletcherestates.com](mailto:chiswicksales@fletcherestates.com)

Energy Rating: C. We aim to make our particulars both accurate and reliable. However they are not guaranteed; nor do they form part of an offer or contract. If you require clarification on any points then please contact us, especially if you're traveling some distance to view. Please note that appliances and heating systems have not been tested and therefore no warranties can be given as to their good working order.