

# FLETCHERS

ESTATE AGENTS



**Colonial Drive, W4**

**£1,000,000**

This three bedroom apartment has been upgraded meticulously to a high standard throughout, including bespoke fixtures, additional built in wardrobes and a stunning open plan kitchen / reception / dining room leading through to a West facing terrace with views over a nature reserve. Additionally there is a porter (from 7am to 7pm), secure entry system, lift access and a private off street parking space included.

The spacious (23 foot wide) master bedroom has floor to ceiling windows, dressing area, built in bespoke wardrobes and a superb en-suite. There is a further second double bedroom, and a third bedroom which has currently been converted into a dressing room. The space to the rear offers dining, reception and a spectacular kitchen and island offering an ideal space for entertaining, this leads out to the West facing terrace.



This three bedroom apartment has been upgraded meticulously to a high standard throughout, including bespoke fixtures, additional built in wardrobes and a stunning open plan kitchen / reception / dining room leading through to a West facing terrace with views over a nature reserve. Additionally there is a porter (from 7am to 7pm), secure entry system, lift access and a private off street parking space included.

The spacious (23 foot wide) master bedroom has floor to ceiling windows, dressing area, built in bespoke wardrobes and a superb en-suite. There is a further second double bedroom, and a third bedroom which has currently been converted into a dressing room.

The space to the rear offers dining, reception and a spectacular kitchen and island offering an ideal space for entertaining, this leads out to the West facing terrace. Ideally located just North of Chiswick Park station (District line), which is just 0.1m away. Chiswick High Road and Turnham Green offer a brilliant selection of shops, cafés and restaurants. By car, the A4/M4 is easy access into and out of London.

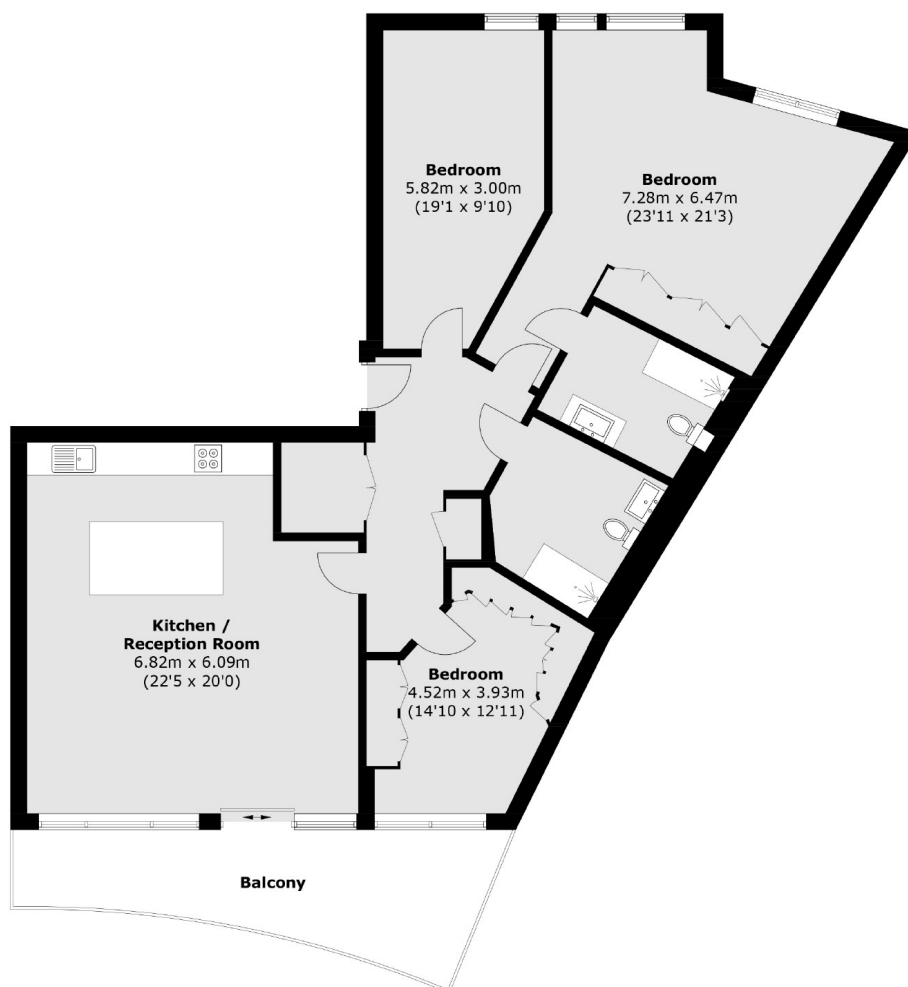
- Three Bedrooms • Two Bathrooms • West Facing Terrace •
- Lift Access • Porter • Private Parking •





# FLETCHERS

## ESTATE AGENTS



Total area (approx.): 129.1 sq. m (1,389.6 sq. ft)  
Balcony: 16.8 sq. m (180.8 sq. ft)

Fletchers Chiswick Turnham Green Sales  
58 Turnham Green Terrace  
London  
W4 1QP  
020 8987 3000  
[chiswicksales@fletcherestates.com](mailto:chiswicksales@fletcherestates.com)

Energy Rating: B We aim to make our particulars both accurate and reliable. However they are not guaranteed; nor do they form part of an offer or contract. If you require clarification on any points then please contact us, especially if you're traveling some distance to view. Please note that appliances and heating systems have not been tested and therefore no warranties can be given as to their good working order