

FLETCHERS

ESTATE AGENTS



Heathfield Terrace, W4

£750,000

A rare opportunity to acquire a spacious and elegant flat on the ground floor of this elegant 1930's Art Deco building situated in the sought after Watchfield Estate with beautifully maintained grounds. A very large, circa 1200 sq ft, two bedroom apartment with fantastic proportions, a private terrace and for sale 'chain free'.



The service charge includes off street parking, Heating & Hot Water, daily rubbish collection from your front door, building maintenance and insurance and an Estate Manager/Porter.

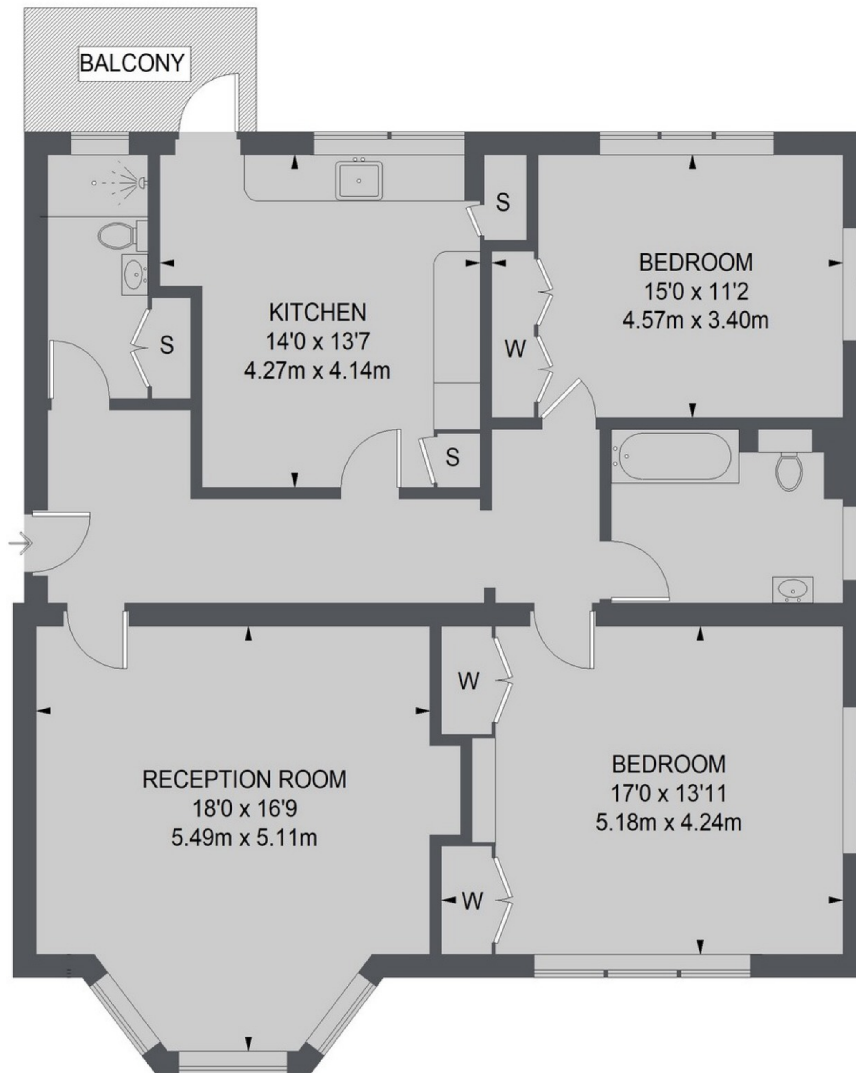
The location is superb just south of Turnham Green and Christ Church, and an easy walk to Waitrose on Chiswick High Road with Chiswick Park Station just beyond. Both Turnham Green Terrace & Devonshire Road are a comfortable stroll away as are the wonderful river walks along the Thames Path. Heathrow Airport is 9 miles from your front door and access to the A4/M4 is minutes away in the car.

- Two Double Bedrooms • Family Bathroom • Shower Room •
- Modern Kitchen/Diner • Reception Room • Terrace, Communal Gardens •
- Off Street Parking •



FLETCHERS

ESTATE AGENTS



GROUND FLOOR

TOTAL APPROX. FLOOR AREA
1194 SQ. FT. (110.90 SQ. M.)

Fletchers Chiswick Turnham Green Sales
58 Turnham Green Terrace
London
W4 1QP
020 8987 3000
chiswicksales@fletcherestates.com

Energy Rating: D We aim to make our particulars both accurate and reliable. However they are not guaranteed; nor do they form part of an offer or contract. If you require clarification on any points then please contact us, especially if you're traveling some distance to view. Please note that appliances and heating systems have not been tested and therefore no warranties can be given as to their good working order