

# FLETCHERS

ESTATE AGENTS



## Eastbury Grove, W4

£750,000

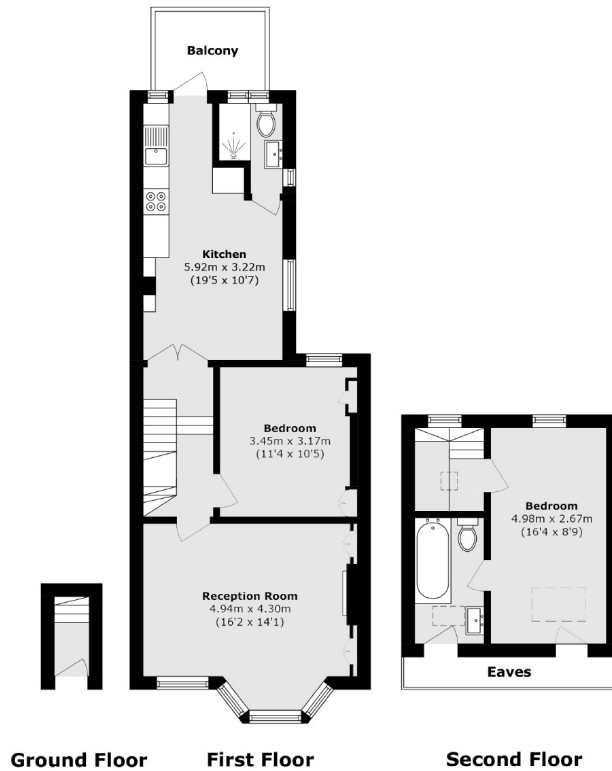
A spacious top floor split-level apartment consisting of two bedrooms, two bathrooms, a separate kitchen/breakfast room which leads onto a private balcony and a large reception space, perfect for entertaining.

Eastbury Grove is well positioned for Chiswick High Road, with a brilliant selection of shops, restaurants and cafés, both Turnham Green and Stamford Brook tube stations. The open spaces of Ravenscourt Park and Chiswick House are also within a mile.

- Two Double Bedrooms • Two Bathrooms • Large Kitchen/Diner • Full Width Reception Room • Sunny Balcony • Chiswick High Road •

# FLETCHERS

ESTATE AGENTS



Total area (approx.): 79.6 sq. m (856.8 sq. ft)  
(Excluding Eaves)  
Balcony area (approx.): 4.6 sq. m (49.5 sq. ft)

Fletchers Chiswick Turnham Green Sales  
58 Turnham Green Terrace, London, W4 1QP  
020 8987 3000  
[chiswicksales@fletcherestates.com](mailto:chiswicksales@fletcherestates.com)

Energy Rating: . We aim to make our particulars both accurate and reliable. However they are not guaranteed; nor do they form part of an offer or contract. If you require clarification on any points then please contact us, especially if you're traveling some distance to view. Please note that appliances and heating systems have not been tested and therefore no warranties can be given as to their good working order.