

# FLETCHERS

ESTATE AGENTS



## Heritage Place, TW8

£625,000

Within the secure and gated Heritage Walk and alongside the dramatic buildings of The London Museum of Water & Steam. A stunning and superbly presented 2nd floor two double bedroom apartment with circa 900 sq ft of accommodation, a sunny west facing balcony, and secure underground parking.

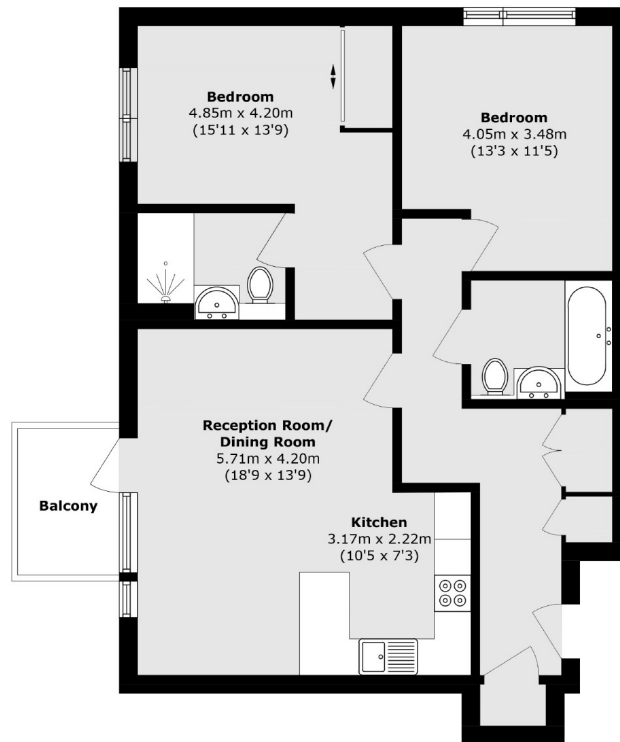
Heritage Walk is superbly placed only moments from Kew Bridge Overground station, wonderful riverside walks along the Thames Path, with a great selection of Gastro Pubs, and the useful Kew Retail Park with a large Marks and Spencers just beyond.

- Two Double Bedrooms • En-Suite Shower • Sunny Reception Room • Fully Equipped Kitchen • West Facing Balcony • Secure Underground Parking •

# FLETCHERS

## ESTATE AGENTS

---



Total area (approx.): 82.8 sq. m (891.2 sq. ft)

Balcony area (approx.): 4.0 sq. m (43.0 sq. ft)

Fletchers Chiswick Turnham Green Sales  
58 Turnham Green Terrace, London, W4 1QP  
020 8987 3000  
[chiswicksales@fletcherestates.com](mailto:chiswicksales@fletcherestates.com)

Energy Rating: B. We aim to make our particulars both accurate and reliable. However they are not guaranteed; nor do they form part of an offer or contract. If you require clarification on any points then please contact us, especially if you're traveling some distance to view. Please note that appliances and heating systems have not been tested and therefore no warranties can be given as to their good working order.