

FLETCHERS

ESTATE AGENTS



Chiswick High Road, W4

£900,000

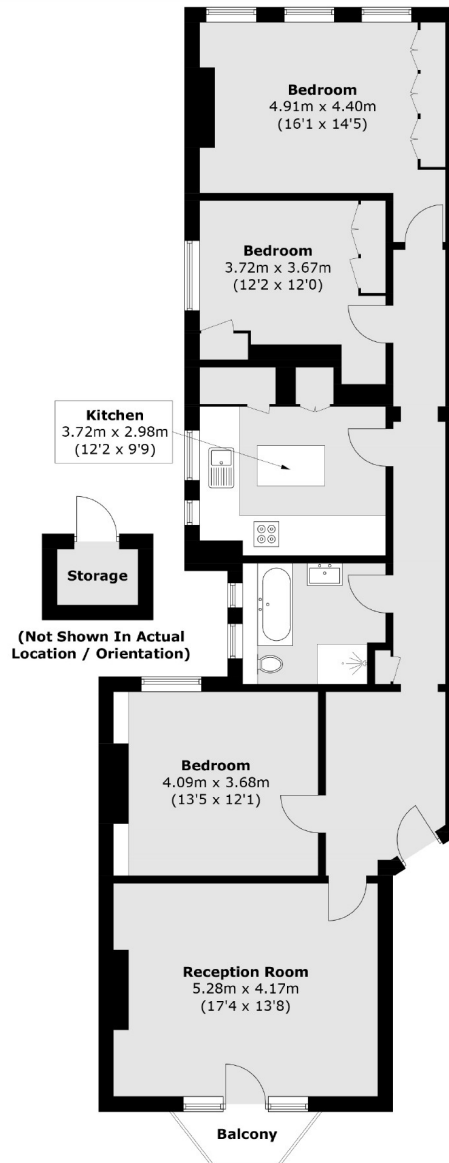
On the top floor of a stunning red brick Victorian mansion block is this three bedroom apartment in superb condition throughout, including some original features such as coving and sash windows. The spacious reception room has access to a small private balcony, and the separate kitchen has been upgraded to include dining space perfect for entertaining. There is a share in the freehold, and a private secure storage unit in the basement.

A superb location on Chiswick High Road with an array of shops, restaurants and cafés to choose from. Serviced by Stamford Brook tube station just a short walk away, and moments from the Thames riverside.

- Attractive Mansion Flat • Period Features • Three Bedrooms • Separate Kitchen • Upgraded Tastefully • Share of Freehold •

FLETCHERS

ESTATE AGENTS



Total area (approx.): 110.6 sq. m (1,190.5 sq. ft)
Storage area (approx.): 1.9 sq. m (20.4 sq. ft)
Balcony area (approx.): 2.2 sq. m (23.7 sq. ft)

Fletchers Chiswick Turnham Green Sales
58 Turnham Green Terrace, London, W4 1QP
020 8987 3000
chiswicksales@fletcherestates.com

Energy Rating: C. We aim to make our particulars both accurate and reliable. However they are not guaranteed; nor do they form part of an offer or contract. If you require clarification on any points then please contact us, especially if you're traveling some distance to view. Please note that appliances and heating systems have not been tested and therefore no warranties can be given as to their good working order.