

# FLETCHERS

ESTATE AGENTS



## Heathfield Terrace, W4

£499,950

A spacious two bedroom apartment within the prestigious Heathfield Court, a red brick style mansion block in the heart of Chiswick. Set on the first floor with lift access and secure entry system. The flat consists of two well sized double bedrooms, a separate kitchen and a large reception room with the added benefit of a Garage included as well as a right to park off street within the development. The service charge includes heating/hot water for which the latest cost is £1212 a year.

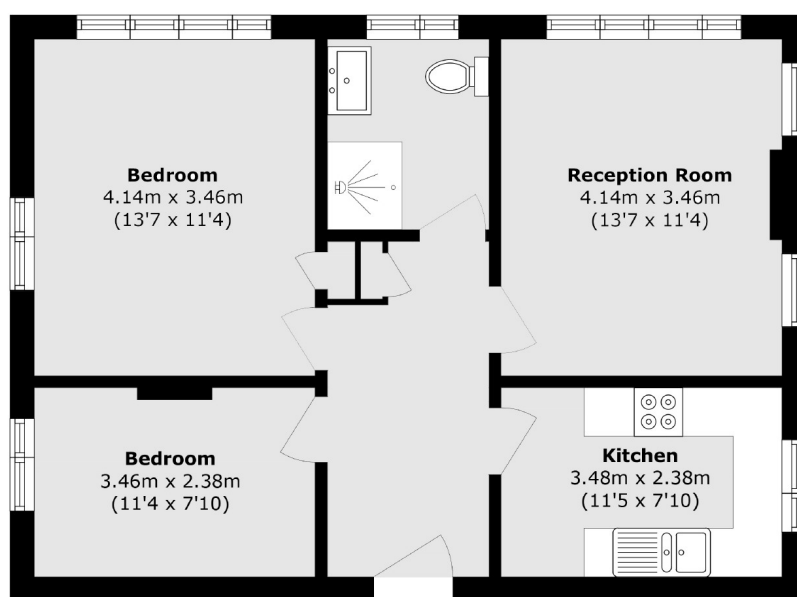
Heathfield Court is a very well managed and maintained apartment block, in a prime location only moments from the wonderful array of High Street brands, restaurants, boutiques and supermarkets on Chiswick High Road, and has easy access to either Chiswick Park or Turnham Green stations.

• Garage Included • Two Bedrooms • Separate Kitchen/Reception • Lift Access • Secure Entry • Off Street Parking •

# FLETCHERS

ESTATE AGENTS

---



Total area (approx.): 60.9 sq. m (655.5 sq. ft)

Fletchers Chiswick Turnham Green Sales  
58 Turnham Green Terrace, London, W4 1QP  
020 8987 3000  
[chiswicksales@fletcherestates.com](mailto:chiswicksales@fletcherestates.com)

Energy Rating: C. We aim to make our particulars both accurate and reliable. However they are not guaranteed; nor do they form part of an offer or contract. If you require clarification on any points then please contact us, especially if you're traveling some distance to view. Please note that appliances and heating systems have not been tested and therefore no warranties can be given as to their good working order.