

FLETCHERS

ESTATE AGENTS



Ranelagh Gardens, W6

£695,000

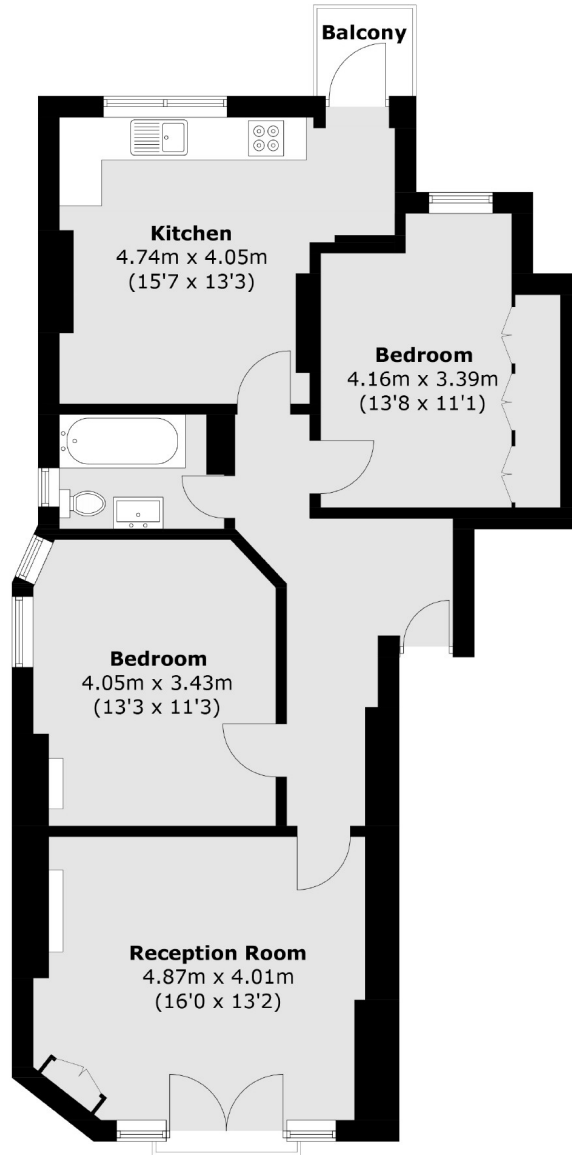
A two double bedroom first floor mansion style apartment brimming with period features including ornate original coving, fireplaces and high ceilings throughout.

Positioned between Chiswick and Hammersmith, within easy reach of the popular Chiswick High Road and Turnham Green Terrace offering a fantastic array of amenities. Stamford Brook tube station is a very short walk, as well as the green spaces of Ravenscourt Park.

- First Floor • Two Bedrooms • Original Features • Eat in Kitchen • No Onward Chain • Extended Lease Available •

FLETCHERS

ESTATE AGENTS



Total area (approx.): 79.0 sq. m (850.3 sq. ft)
Balcony: 1.7 sq. m (18.3 sq. ft)

Fletchers Chiswick Turnham Green Sales
58 Turnham Green Terrace, London, W4 1QP
020 8987 3000
chiswicksales@fletcherestates.com

Energy Rating: C. We aim to make our particulars both accurate and reliable. However they are not guaranteed; nor do they form part of an offer or contract. If you require clarification on any points then please contact us, especially if you're traveling some distance to view. Please note that appliances and heating systems have not been tested and therefore no warranties can be given as to their good working order.