

FLETCHERS

ESTATE AGENTS



Dale Street, W4

£475,000

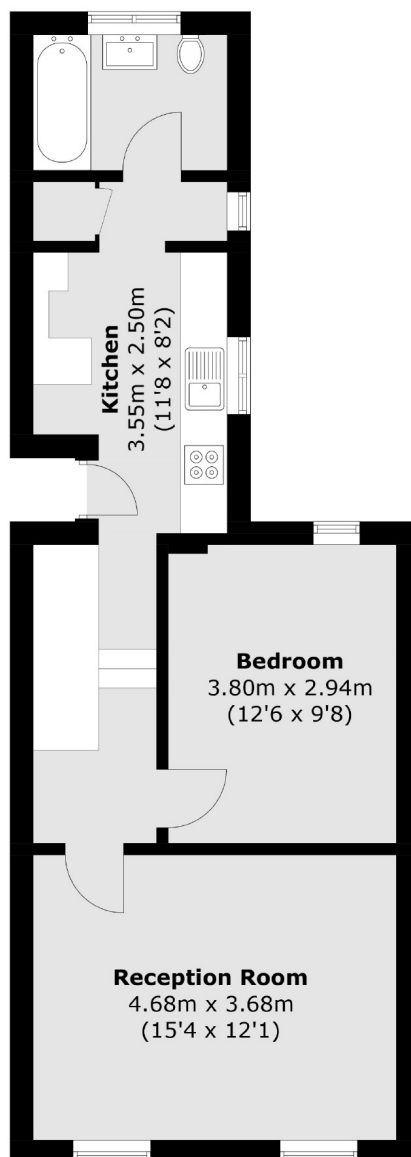
Located in the heart of the Glebe Estate is this one bedroom apartment offering a large reception room, separate kitchen, with the benefit of no onward chain. Perfect for first time buyers or investors.

Dale Street is only 200 metres from the numerous shops and restaurants along both Chiswick High road and Turnham Green tube station.

- Glebe Estate • One Bedroom Apartment • Top Floor • Chiswick High Road • No Onward Chain • Close to Tube Station •

FLETCHERS

ESTATE AGENTS



Total area (approx.): 51.3 sq. m (552.2 sq. ft)

Fletchers Chiswick Turnham Green Sales
58 Turnham Green Terrace, London, W4 1QP
020 8987 3000
chiswicksales@fletcherestates.com

Energy Rating: D. We aim to make our particulars both accurate and reliable. However they are not guaranteed; nor do they form part of an offer or contract. If you require clarification on any points then please contact us, especially if you're traveling some distance to view. Please note that appliances and heating systems have not been tested and therefore no warranties can be given as to their good working order.