

# FLETCHERS

ESTATE AGENTS



## Chiswick Village, W4

£390,000

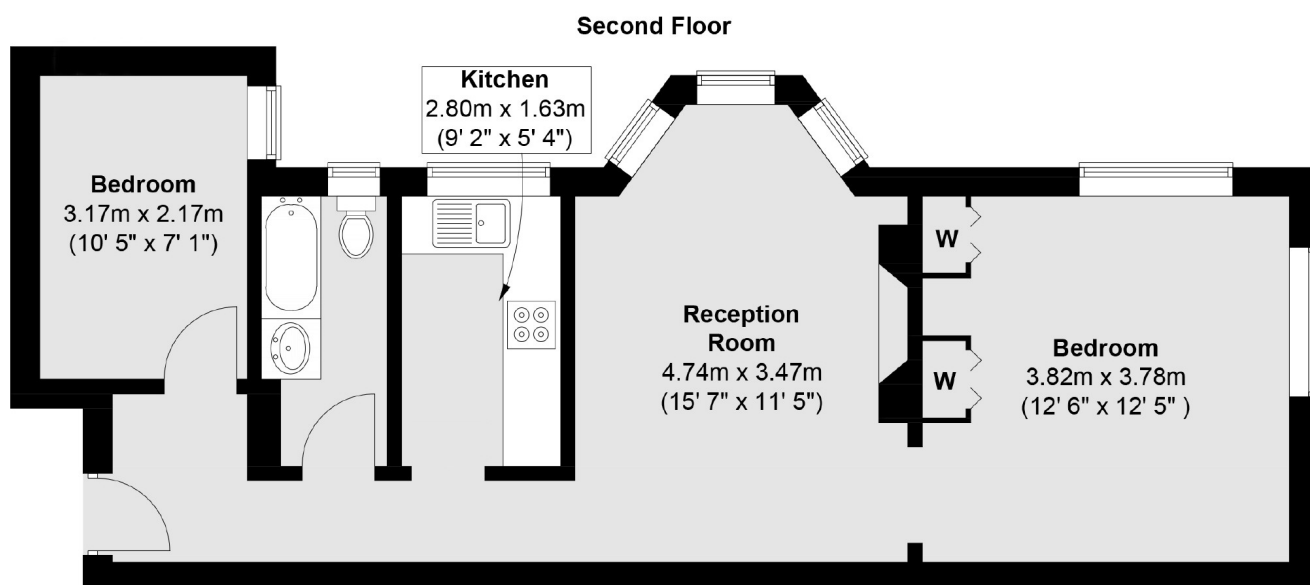
A two double bedroom flat located in a secure development with a large reception room and separate kitchen, perfect for first time buyers or investors. The property further benefits from a communal garden. Service charge includes heating and hot water.

Chiswick Village is within half a mile of Gunnersbury and Kew Bridge stations. Chiswick High Road with its shops, cafes, restaurants and bars are within walking distance.

- Share Of Freehold • Two Bedrooms • Heating And Hot Water • Large Reception Room • Communal Garden • No Onward Chain •

# FLETCHERS

ESTATE AGENTS



Total area (approx.) : 54 sq. m (581 sq. ft)

Fletchers Chiswick Turnham Green Sales  
58 Turnham Green Terrace, London, W4 1QP  
020 8987 3000  
[chiswicksales@fletcherestates.com](mailto:chiswicksales@fletcherestates.com)

Energy Rating: C. We aim to make our particulars both accurate and reliable. However they are not guaranteed; nor do they form part of an offer or contract. If you require clarification on any points then please contact us, especially if you're traveling some distance to view. Please note that appliances and heating systems have not been tested and therefore no warranties can be given as to their good working order.