

FLETCHERS

ESTATE AGENTS



Stile Hall Parade, W4

£375,000

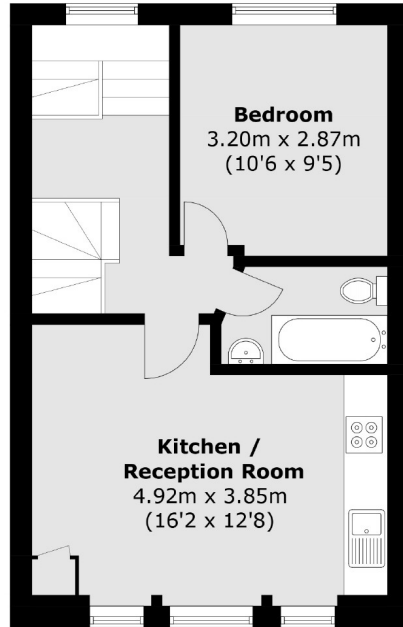
A split level apartment, occupying the upper floors with two double bedrooms and offered with no onward chain.

Stile Hall Parade is located close to Kew Bridge Station whilst Gunnersbury Station is a short walk. There are plenty of shops, cafes and restaurants within walking distance. The A4/M4 offer easy access in and out of London.

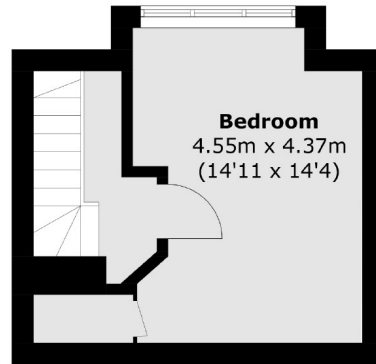
- No Onward Chain
- Split Level Apartment
- Occupying the Upper Floors
- Close to the River Thames
- Strand on the Green
- Riverside

FLETCHERS

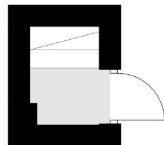
ESTATE AGENTS



Second Floor



Third Floor



First Floor

Total area (approx.): 59.5 sq. m (640.4 sq. ft)

Fletchers Chiswick Turnham Green Sales
58 Turnham Green Terrace, London, W4 1QP
020 8987 3000
chiswicksales@fletcherestates.com

Energy Rating: D. We aim to make our particulars both accurate and reliable. However they are not guaranteed; nor do they form part of an offer or contract. If you require clarification on any points then please contact us, especially if you're traveling some distance to view. Please note that appliances and heating systems have not been tested and therefore no warranties can be given as to their good working order.