

FLETCHERS

ESTATE AGENTS



Chaseley Drive, W4

£550,000

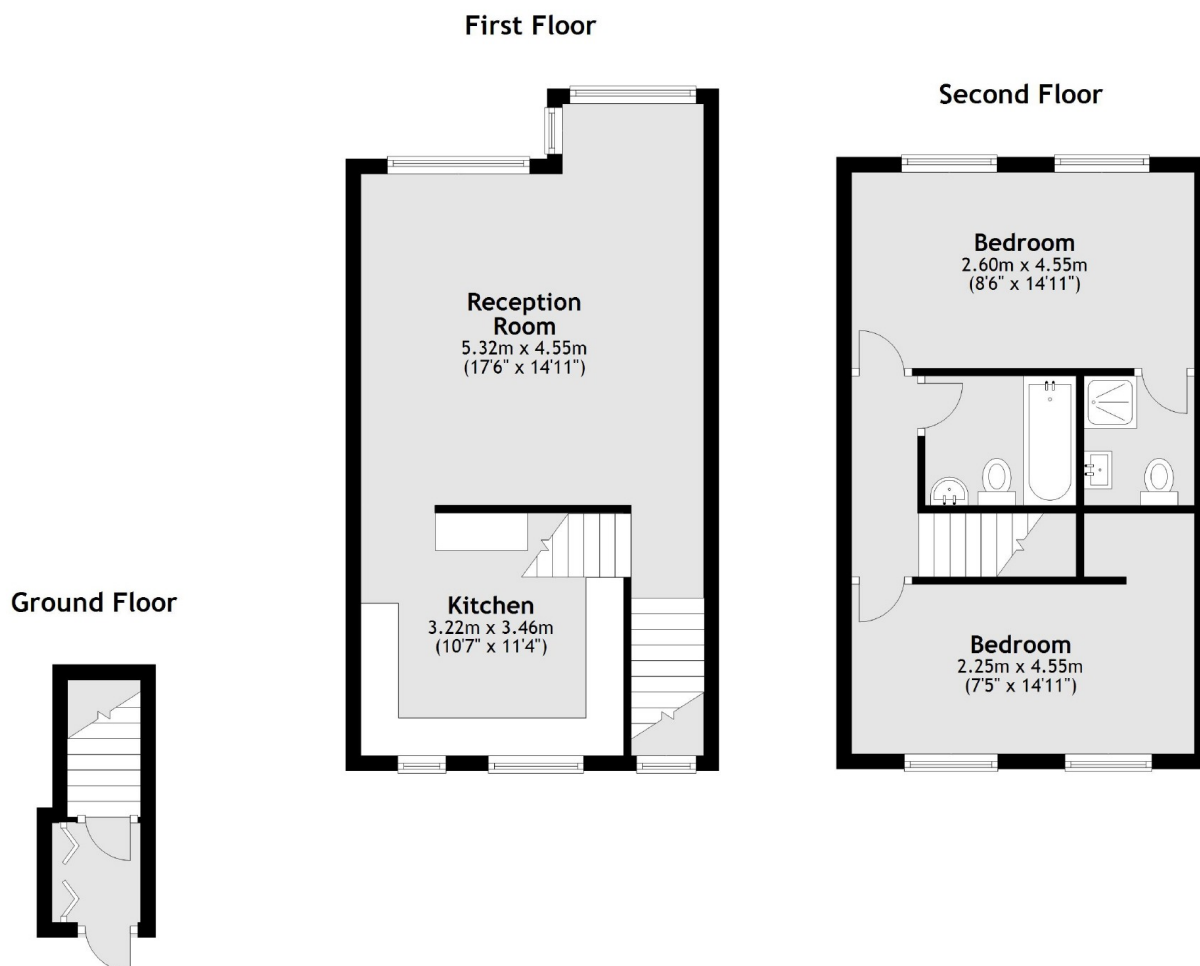
A modern split level apartment set in a gated development. A private entrance leads up to a bright reception room and recently fitted kitchen. Upstairs, two bedrooms are accompanied by two bathrooms. The property comes with allocated off street parking and shared gardens.

In a central location within easy reach of Gunnersbury Station and the many amenities on Chiswick High Road. The popular Riverside pubs and cafés of Strand on the Green is nearby, as well as easy access into and out of London via the A4/M4.

• Offers In Excess Of • Two Bathrooms • Split Level • Gated Development • Separate Kitchen • Allocated Parking •

FLETCHERS

ESTATE AGENTS



Total area: approx. 75.3 sq. metres (811.0 sq. feet)

Fletchers Chiswick Turnham Green Sales
58 Turnham Green Terrace, London, W4 1QP
020 8987 3000
chiswicksales@fletcherestates.com

Energy Rating: C. We aim to make our particulars both accurate and reliable. However they are not guaranteed; nor do they form part of an offer or contract. If you require clarification on any points then please contact us, especially if you're traveling some distance to view. Please note that appliances and heating systems have not been tested and therefore no warranties can be given as to their good working order.