

# FLETCHERS

ESTATE AGENTS



## Copenhagen Gardens, W4

£760,000

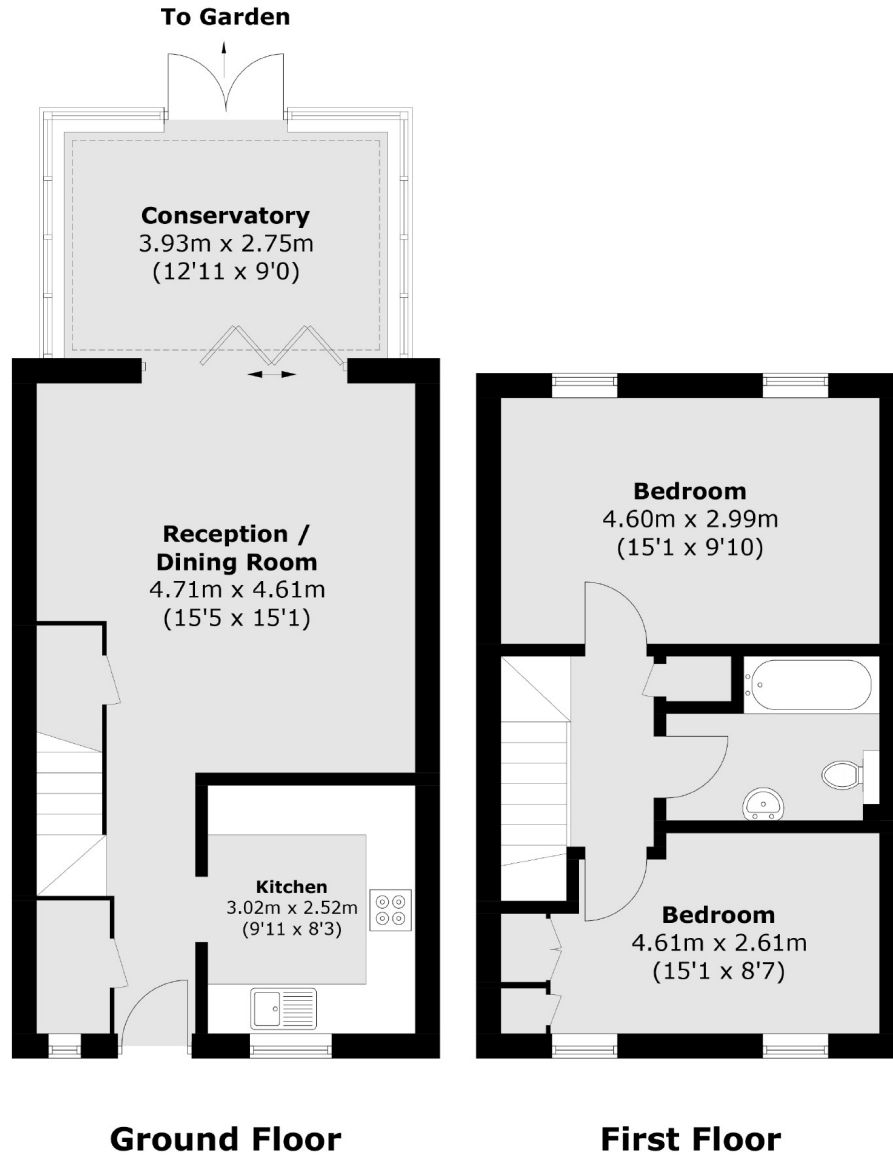
A charming two bedroom cottage in a popular gated development. This freehold property benefits from a separate kitchen, a reception room and a conservatory leading to a west-facing garden. Further benefits include residents parking and a garage.

An abundance of amenities are within walking distance at Southfields Recreational Grounds, Chiswick High Road, Turnham Green Terrace and Acton High Street. There is an excellent bus service with a stop at the gates.

- Offers In Excess Of • Two Bedrooms • Gated Development • Off-Street Parking • Garage • West-Facing Garden •

# FLETCHERS

ESTATE AGENTS



Total area (approx.): 84.2 sq. m (906.3 sq. ft)

Fletchers Chiswick Turnham Green Sales  
58 Turnham Green Terrace, London, W4 1QP  
020 8987 3000  
chiswicksales@fletcherestates.com

Energy Rating: C. We aim to make our particulars both accurate and reliable. However they are not guaranteed; nor do they form part of an offer or contract. If you require clarification on any points then please contact us, especially if you're traveling some distance to view. Please note that appliances and heating systems have not been tested and therefore no warranties can be given as to their good working order.