

# FLETCHERS

ESTATE AGENTS



## Berrymead Gardens, W3

£635,000

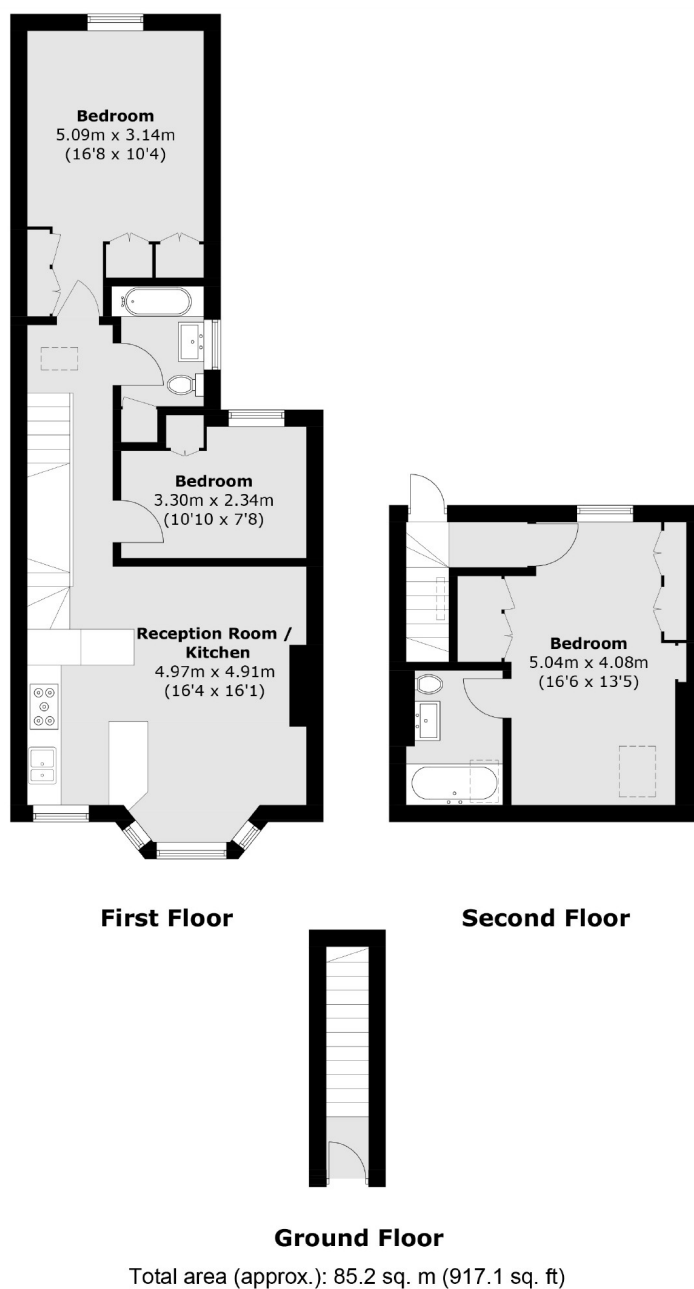
A three bedroom apartment, split over the top two floors of a Victorian house. The property has been carefully remodelled and architecturally designed with attention to detail throughout. Three bedrooms benefit from bespoke fitted wardrobes and are accompanied by two bathrooms and a spacious open plan kitchen/reception room.

Ideally located in the South Acton area with Acton High Street and amenities readily available on the door step. Acton Town (District and Piccadilly) and South Acton (Overground) stations are both nearby as is the Ofsted rated outstanding Ark Priory Academy.

• Three Bedrooms • Two Bathrooms • Long Lease/No Ground Rent • Modern Design • Bespoke Fittings • Victorian Conversion •

# FLETCHERS

ESTATE AGENTS



Fletchers Chiswick Turnham Green Sales  
58 Turnham Green Terrace, London, W4 1QP  
020 8987 3000  
[chiswicksales@fletcherestates.com](mailto:chiswicksales@fletcherestates.com)

Energy Rating: . We aim to make our particulars both accurate and reliable. However they are not guaranteed; nor do they form part of an offer or contract. If you require clarification on any points then please contact us, especially if you're traveling some distance to view. Please note that appliances and heating systems have not been tested and therefore no warranties can be given as to their good working order.