

FLETCHERS

ESTATE AGENTS



Sutton Court Road, W4

£535,000

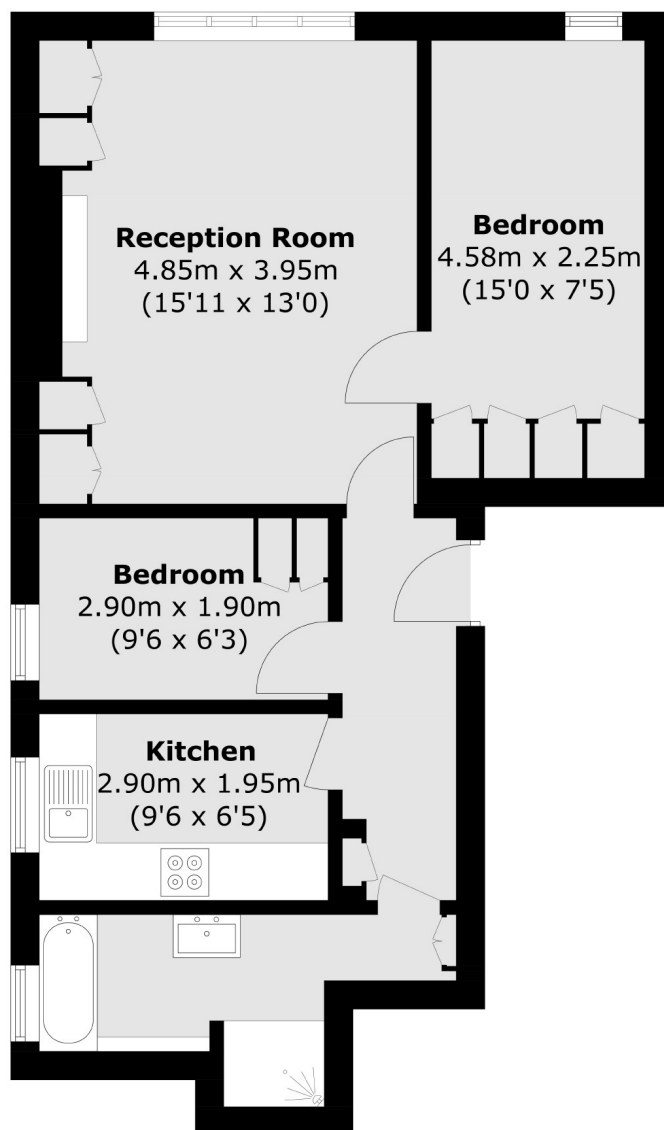
A converted first floor two bedroom apartment in a beautiful Edwardian building refurbished to a high standard. The property offers ample storage with fitted cupboards and built in wardrobes throughout and a high spec bathroom with a bath and separate shower further benefitting from a large reception room with hard wood floors, high ceilings and a feature fire place . The property also comes with a stunning well maintained communal garden.

The property is located in the heart of Grove Park and is close to the river and the Chiswick Mainline station. The location provides easy access to the A4/M4 and is a short walk to Chiswick High Road.

- Share of Freehold • Edwardian Building • Two Bedrooms • Separate Kitchen • Feature Fireplace • Communal Garden •

FLETCHERS

ESTATE AGENTS



Total area (approx.): 54.9 sq. m (590.9 sq. ft)

Fletchers Chiswick Turnham Green Sales
58 Turnham Green Terrace, London, W4 1QP
020 8987 3000
chiswicksales@fletcherestates.com

Energy Rating: D. We aim to make our particulars both accurate and reliable. However they are not guaranteed; nor do they form part of an offer or contract. If you require clarification on any points then please contact us, especially if you're traveling some distance to view. Please note that appliances and heating systems have not been tested and therefore no warranties can be given as to their good working order.