

FLETCHERS

ESTATE AGENTS



Malthouse Drive, W4

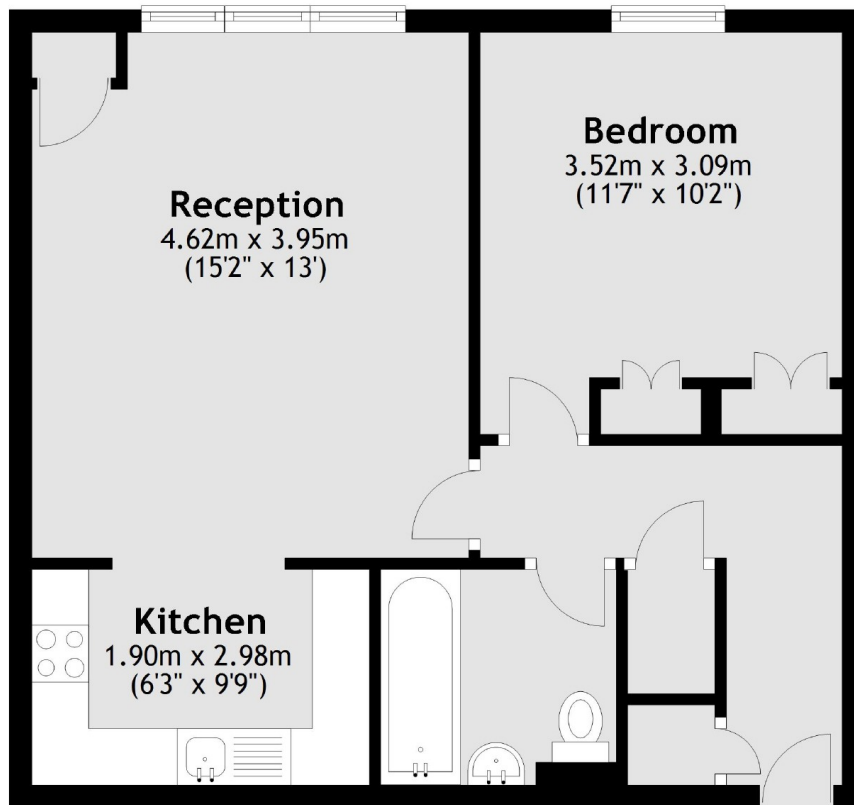
£425,000

A one bedroom apartment within a popular development alongside the Chiswick riverside. The property is securely gated with a private parking space, and internally has a double bedroom with built in storage, open plan kitchen and reception room.

Malthouse Drive is a prestigious riverside development on the banks of the Thames. Both Chiswick Overground and Turnham Green are within a mile and with easy access to the A4/M4. Chiswick House and Gardens is also a short walk away.

- One Bedroom • Riverside Development • Phone Entry • Gated • Private Parking • Long Lease •

First Floor



Total area: approx. 47.7 sq. metres (513.1 sq. feet)

Fletchers Chiswick Turnham Green Sales
58 Turnham Green Terrace, London, W4 1QP
020 8987 3000
chiswicksales@fletcherestates.com

Energy Rating: . We aim to make our particulars both accurate and reliable. However they are not guaranteed; nor do they form part of an offer or contract. If you require clarification on any points then please contact us, especially if you're traveling some distance to view. Please note that appliances and heating systems have not been tested and therefore no warranties can be given as to their good working order.