



Hartington Road, W4

£390,000

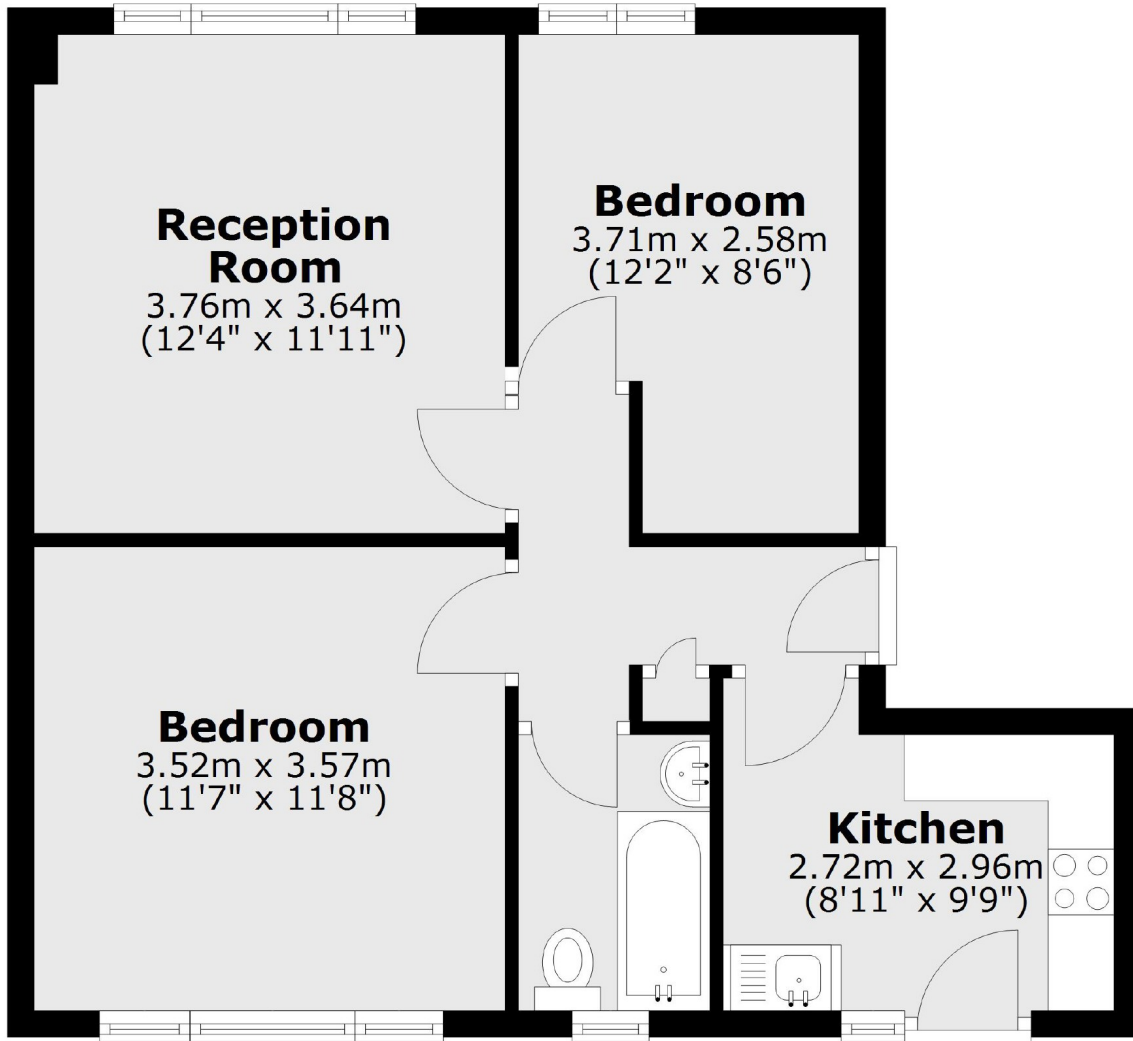
A two bedroom first floor apartment in this impressive Art Deco building designed by Jon Adams in 1938, on the banks of the River Thames. The apartment has been recently refurbished with new flooring in the lounge and the bedroom and has been repainted and the building has been subject to recent works improving its decor. There are river views from the kitchen and direct access to the estates' private gardens with picnic tables and panoramic views over the river.

The river offers wonderful walks along the Thames Path, leading to many excellent local pubs including the City Barge. A little further afield is Chiswick High Road which is lined with excellent parades of independent shops, restaurants and cafés, and Soho House's High Road House. Chiswick also has an excellent farmers market every Sunday. The nearest station is Chiswick Overground which is approximately five minutes' walk away, and there are immediate links to the A4 leading to both Heathrow Airport and Central London.

• Offers In Excess Of • Two Double Bedrooms • Gated Development • Communal Riverside Gardens • Unallocated Residents' Parking • Chain Free •

FLETCHERS

ESTATE AGENTS



Total area: approx. 50.3 sq. metres (541.2 sq. feet)

Fletchers Chiswick Turnham Green Sales
58 Turnham Green Terrace, London, W4 1QP
020 8987 3000
chiswicksales@fletcherestates.com

Energy Rating: C. We aim to make our particulars both accurate and reliable. However they are not guaranteed; nor do they form part of an offer or contract. If you require clarification on any points then please contact us, especially if you're traveling some distance to view. Please note that appliances and heating systems have not been tested and therefore no warranties can be given as to their good working order.