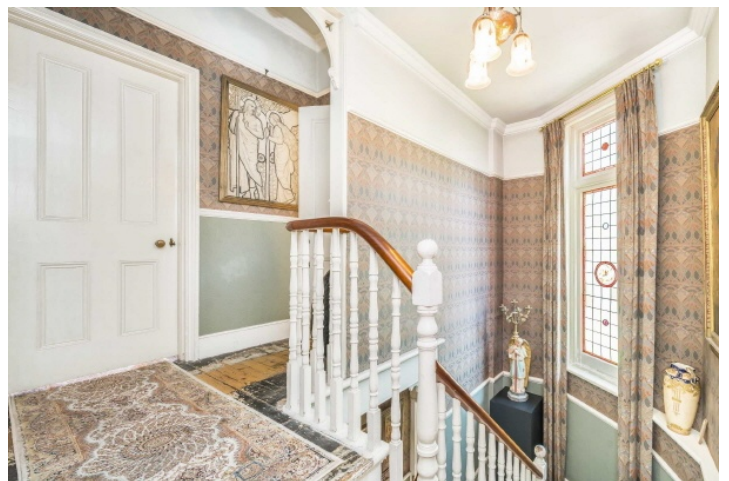


FLETCHERS

ESTATE AGENTS



Acton Lane, W4

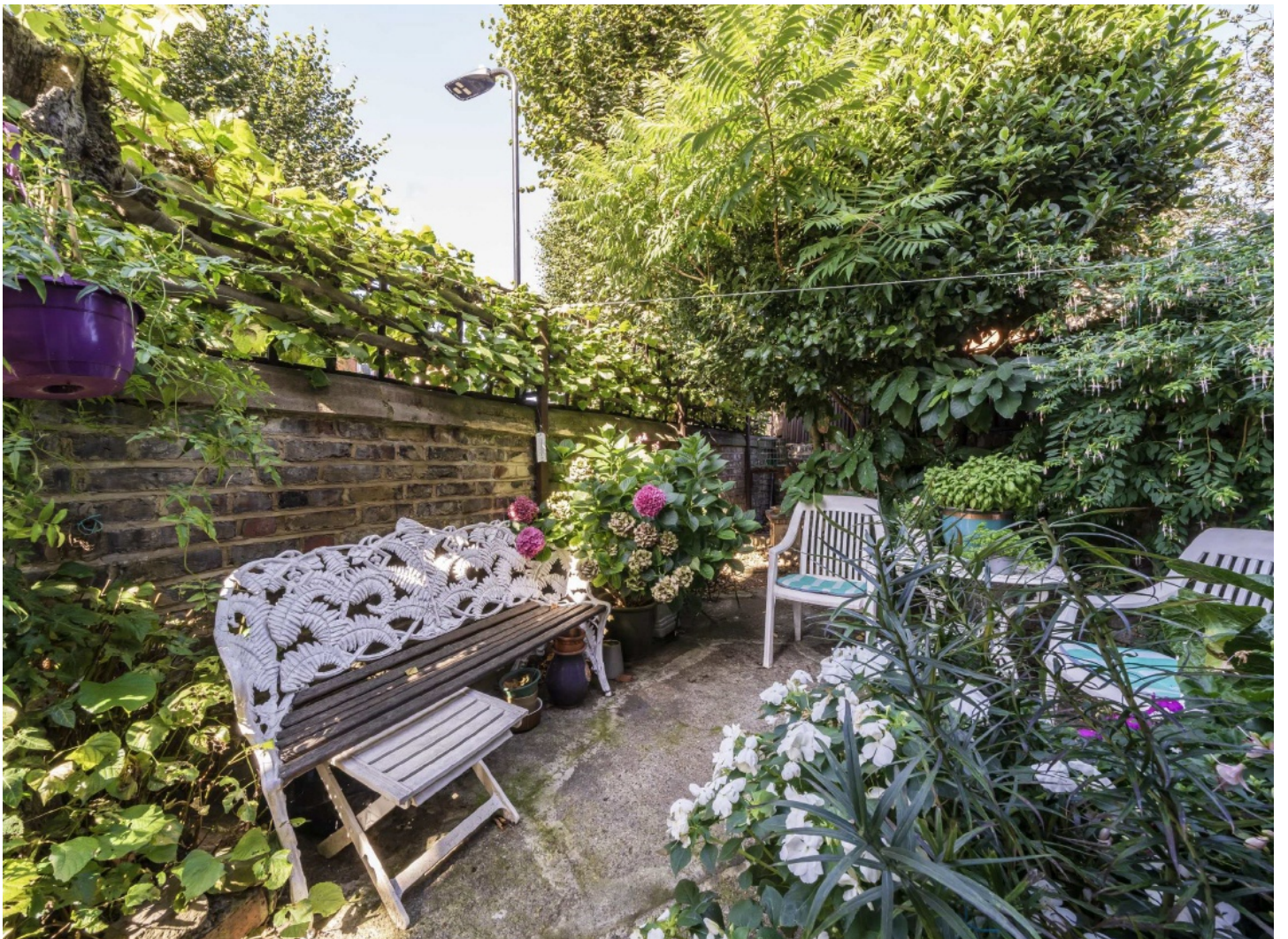
£1,300,000

A truly unique and charming home filled with interesting and original features everywhere you turn. This end of terrace corner plot comes with an impressive double reception room, separate dining room and kitchen. Upstairs includes three double bedrooms, and further potential to extend into the spacious loft. There is off street parking at the front, and a West facing private garden.



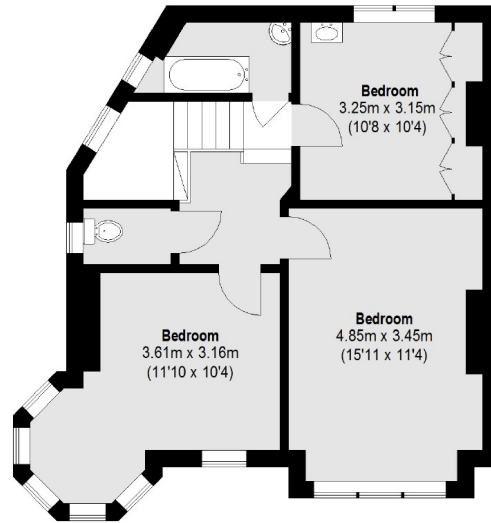
A truly unique and charming home filled with interesting and original features everywhere you turn. This end of terrace corner plot comes with an impressive double reception room, separate dining room and kitchen. Upstairs includes three double bedrooms, and further potential to extend into the spacious loft. There is off street parking at the front, and a West facing private garden. Directly overlooking Acton Green, a very central location within easy reach of the boutique shops, pubs and eateries in Chiswick High Road and Turnham Green. Chiswick Park station is less than 100 meters down the road.

- End of Terrace • Unique Original Features • Three Bedrooms •
- Three Reception Rooms • Off Street Parking • Potential to Extend •

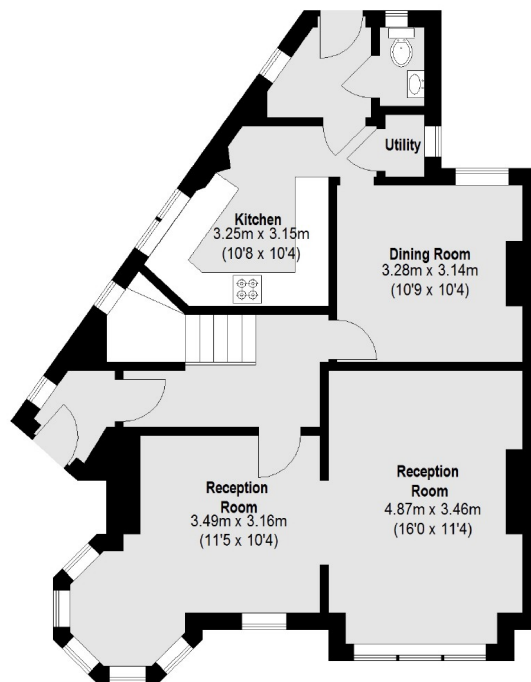


FLETCHERS

ESTATE AGENTS



First Floor



Ground Floor

Total area (approx.): 123.69 sq. m (1331 Sq. ft)

Fletchers Chiswick Turnham Green Sales
58 Turnham Green Terrace
London
W4 1QP
020 8987 3000
chiswicksales@fletcherestates.com

Energy Rating: We aim to make our particulars both accurate and reliable. However they are not guaranteed; nor do they form part of an offer or contract. If you require clarification on any points then please contact us, especially if you're traveling some distance to view. Please note that appliances and heating systems have not been tested and therefore no warranties can be given as to their good working order