

FLETCHERS

ESTATE AGENTS



St. Albans Avenue, W4

£1,599,950

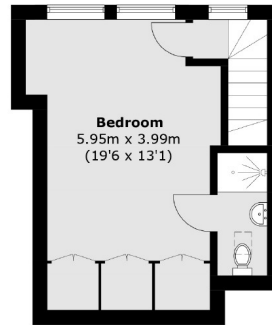
A newly refurbished four bedroom Victorian family home in immaculate condition throughout, with features including cornicing, wood flooring, sash windows and original fireplaces. A double reception leads through to a modern eat-in kitchen and newly landscaped rear garden. There is further potential to extend (STPP).

St Albans Avenue is a popular quiet tree lined residential road on the borders of Bedford Park, with both Turnham Green and Chiswick Park tube stations approximately a quarter of a mile away, and plenty of amenities available at Chiswick High Road and Turnham Green Terrace.

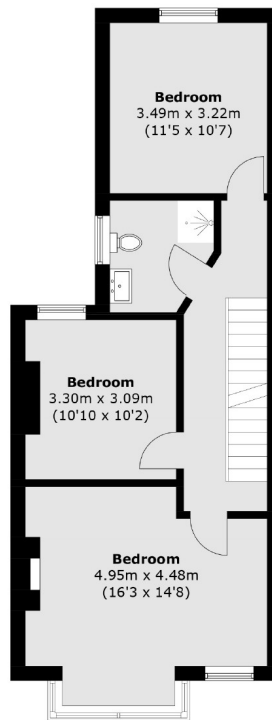
- Four Bedrooms • Two Bathrooms • Double Reception Room • Separate Kitchen • Landscaped Garden • Victorian Features •

FLETCHERS

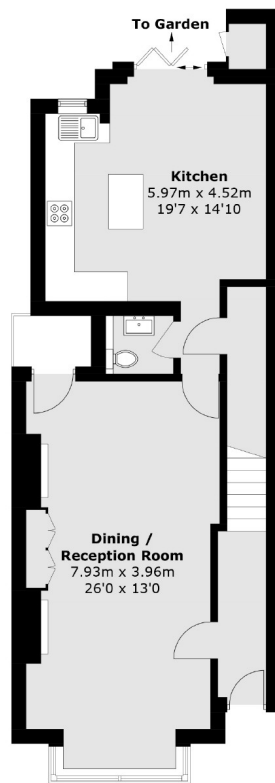
ESTATE AGENTS



Second Floor



First Floor



Ground Floor

Total area (approx.): 144.6 sq. m (1,556.4 sq. ft)
External Cupboard: 0.7 sq. m (7.5 sq. ft)

Fletchers Chiswick Turnham Green Sales
58 Turnham Green Terrace, London, W4 1QP
020 8987 3000
chiswicksales@fletcherestates.com

Energy Rating: D. We aim to make our particulars both accurate and reliable. However they are not guaranteed; nor do they form part of an offer or contract. If you require clarification on any points then please contact us, especially if you're traveling some distance to view. Please note that appliances and heating systems have not been tested and therefore no warranties can be given as to their good working order.