

FLETCHERS

ESTATE AGENTS



North Road, TW8

£900,000

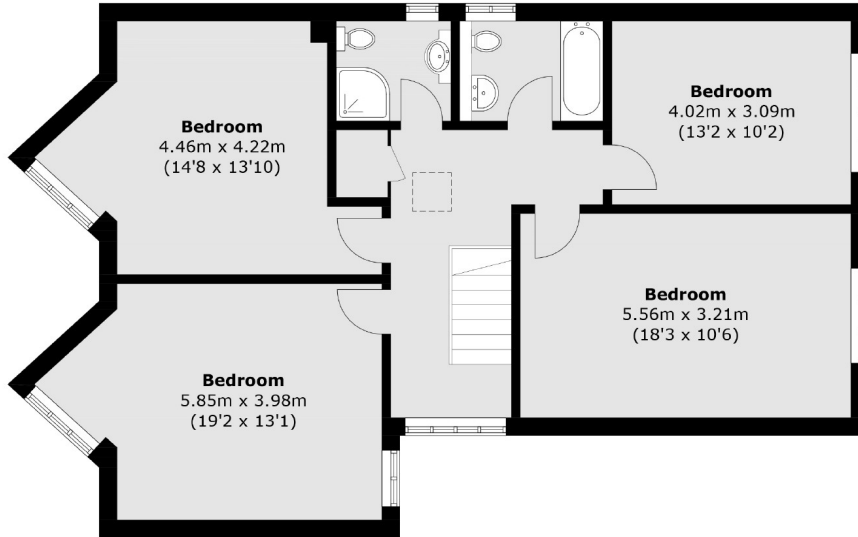
A unique, modern detached home in excess of 2000 sq foot including four double bedrooms, a South facing garden and a double garage. Chapel House was built to conserve energy with solar panels and a rainwater harvesting system.

Well positioned with the Thames at the end of the road offering picturesque walks into Chiswick and Brentford Docks. Kew Bridge Station has a 28 minute line to London Waterloo, and by car there is easy access to the A4/M4.

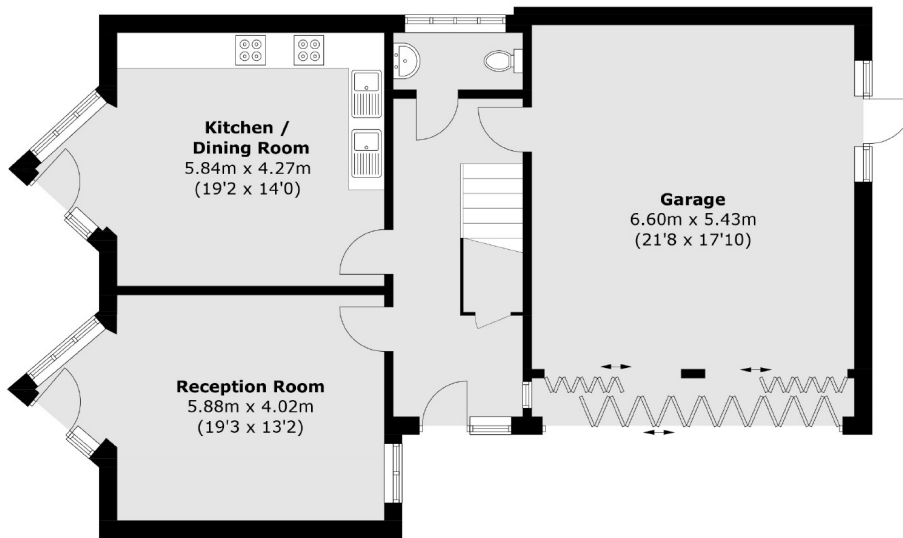
- Detached House • Modern Build • Four Bedrooms • Two Bathrooms • Double Garage • Riverside Location •

FLETCHERS

ESTATE AGENTS



First Floor



Ground Floor

Total area (approx.): 187.2 sq. m (2,015.0 sq. ft)
(Including Garage)

Fletchers Chiswick Turnham Green Sales
58 Turnham Green Terrace, London, W4 1QP
020 8987 3000
chiswicksales@fletcherestates.com

Energy Rating: . We aim to make our particulars both accurate and reliable. However they are not guaranteed; nor do they form part of an offer or contract. If you require clarification on any points then please contact us, especially if you're traveling some distance to view. Please note that appliances and heating systems have not been tested and therefore no warranties can be given as to their good working order.