

FLETCHERS

ESTATE AGENTS



Fielding Road, W4

£1,400,000

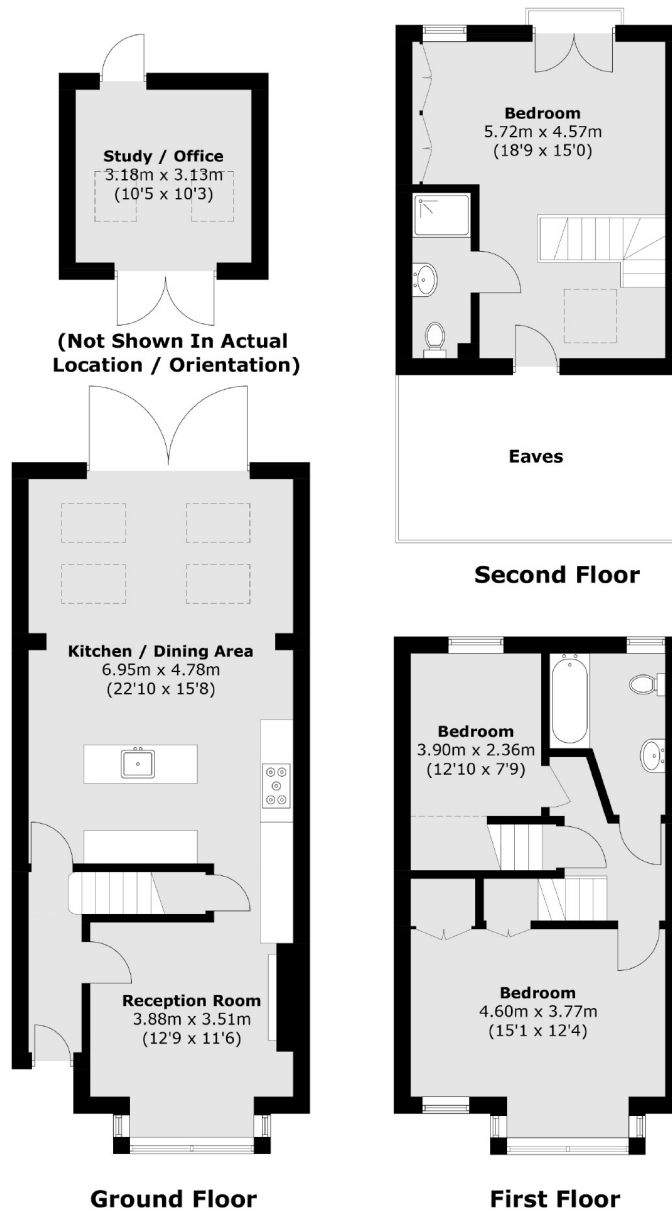
A beautifully presented three bedroom family house located on the outskirts of the highly sought after area of Bedford Park, in Chiswick. Offering two new bathrooms and a south facing garden with an additional garden room/office.

Fielding Road is a quiet residential turning within easy reach of an array of shops, boutiques and restaurants on Chiswick High Road, with Turnham Green station and numerous bus routes also easily accessible.

- Offers In Excess Of • South Facing Garden • Garden Room • No Onward Chain • Turnham Green Station • Quiet Location •

FLETCHERS

ESTATE AGENTS



Total area (approx.): 119.6 sq. m (1,287.3 sq. ft)
Outbuilding area: 10.3 sq. m (110.9 sq. ft)
(Excluding Eaves)

Fletchers Chiswick Turnham Green Sales
58 Turnham Green Terrace, London, W4 1QP
020 8987 3000
chiswicksales@fletcherestates.com

Energy Rating: . We aim to make our particulars both accurate and reliable. However they are not guaranteed; nor do they form part of an offer or contract. If you require clarification on any points then please contact us, especially if you're traveling some distance to view. Please note that appliances and heating systems have not been tested and therefore no warranties can be given as to their good working order.