

FLETCHERS

ESTATE AGENTS



Devonshire Passage, W4

£950,000

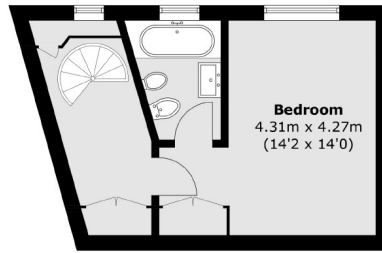
A beautiful mews house offering an open plan living/ kitchen leading to a secluded courtyard, with two bedrooms on the upper floors, both with their own bathrooms. Benefiting with no onward chain and off street parking.

In a superb secret position, just off Duke Road in the popular Glebe Estate, the house is only moments from the High Street, with it's wonderful array of Restaurants, Boutiques and High Street brands.

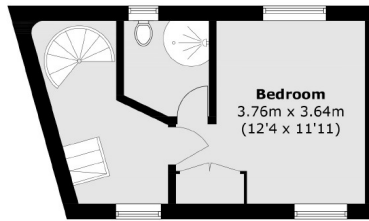
- Freehold House • Utility Room • Off Street Parking • Two Bathrooms • No Onward Chain • Glebe Estate •

FLETCHERS

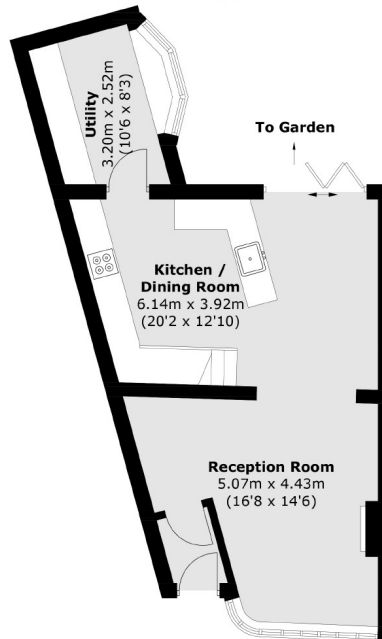
ESTATE AGENTS



Second Floor



First Floor



Ground Floor - Flat B

Total area (approx.): 98.6 sq. m (1,061.3 sq. ft)

Fletchers Chiswick Turnham Green Sales
58 Turnham Green Terrace, London, W4 1QP
020 8987 3000
chiswicksales@fletcherestates.com

Energy Rating: . We aim to make our particulars both accurate and reliable. However they are not guaranteed; nor do they form part of an offer or contract. If you require clarification on any points then please contact us, especially if you're traveling some distance to view. Please note that appliances and heating systems have not been tested and therefore no warranties can be given as to their good working order.