

FLETCHERS

ESTATE AGENTS



Montgomery Road, W4

£1,300,000

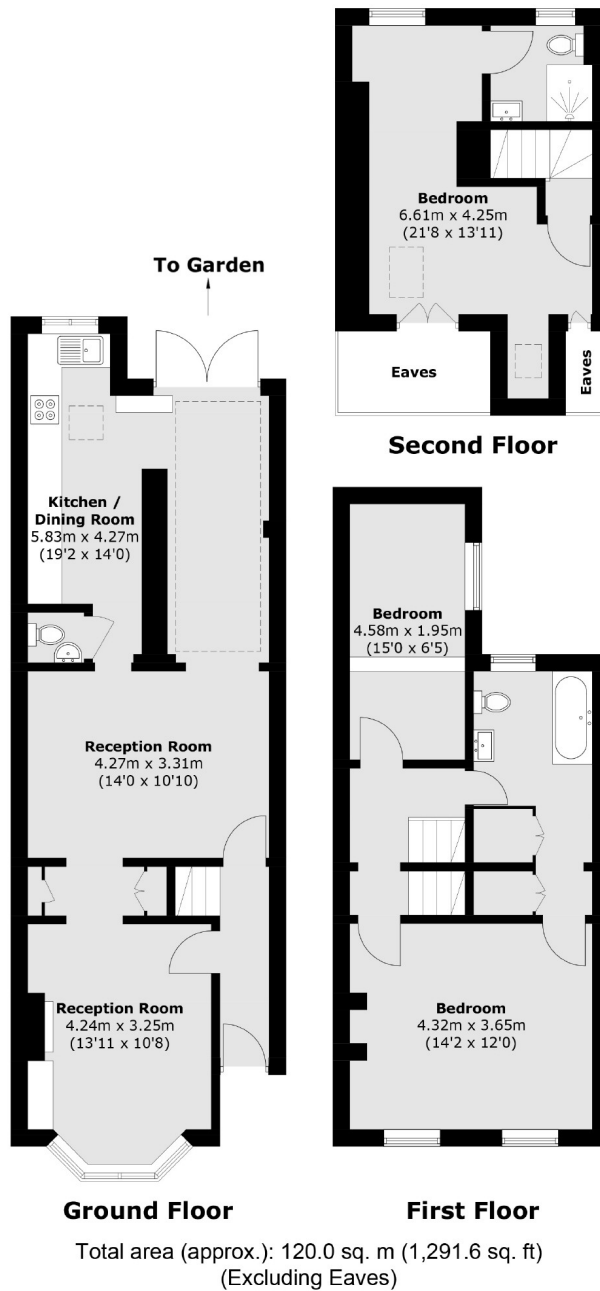
A three bedroom family home that has been well looked after with an extended kitchen/family room and large South facing rear garden.

Montgomery Road is a quiet, residential street within a very short walk of Chiswick Park station. Chiswick High Road is just around the corner with a fantastic selection of boutique shops, restaurants, and cafés to choose from.

- Three Bedrooms • Two Bathrooms & WC • Extended Kitchen • South Facing Garden • Double Reception • Potential to Extend Further •

FLETCHERS

ESTATE AGENTS



Fletchers Chiswick Turnham Green Sales
58 Turnham Green Terrace, London, W4 1QP
020 8987 3000
chiswicksales@fletcherstates.com

Energy Rating: F. We aim to make our particulars both accurate and reliable. However they are not guaranteed; nor do they form part of an offer or contract. If you require clarification on any points then please contact us, especially if you're traveling some distance to view. Please note that appliances and heating systems have not been tested and therefore no warranties can be given as to their good working order.