

# FLETCHERS

ESTATE AGENTS



**Flanders Road, W4**

**£2,495,000**

A five bedroom detached home, which has been updated by the current owners and offers off street parking and a South East facing garden.



As you enter this home you are welcomed by a large entrance hall leading onto an open plan kitchen/dinner with the benefit of a utility room, bathroom and a separate living room with a large bay window and a working fire place.

Upstairs, there are three double bedrooms with two en suites and a family bathroom, with the added benefit of a South/East facing terrace, with views over the gardens.

The second floor offers two further bedrooms, a bathroom, all well proportioned and ample storage in the eaves.

Finally the basement has been converted into a media room perfect for a family or entertaining.

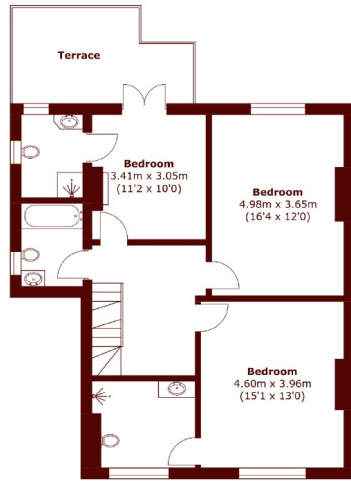
Located within the popular Bedford park conservation area only 400 meters from Turnham Green and with in a quarter of a mile of Chiswick High Road.

- Detached • No Onward Chain • Five Bedrooms •
- Five Bathrooms • Terrace and Garden • Off Street Parking •

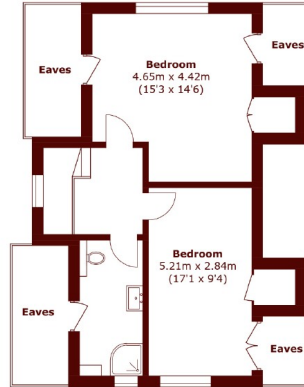


# FLETCHERS

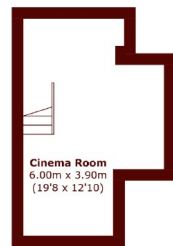
ESTATE AGENTS



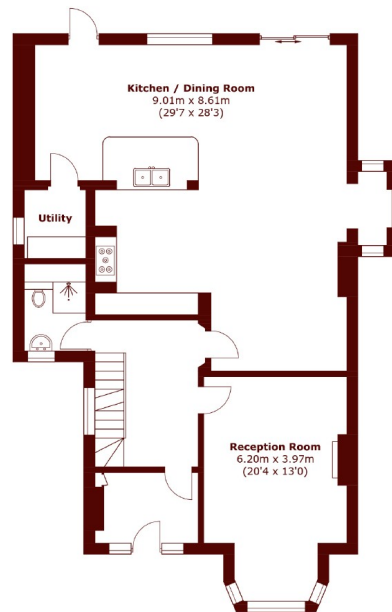
First Floor



Second Floor



Basement



Ground Floor

Total area (approx.): 265.7 sq. m (2,859.8 sq. ft)  
(Including Basement / Excluding Eaves)  
Terrace: 11.7 sq. m (125.9 sq. ft)

Fletchers Chiswick Turnham Green Sales  
58 Turnham Green Terrace  
London  
W4 1QP  
020 8987 3000  
chiswicksales@fletcherestates.com

Energy Rating: We aim to make our particulars both accurate and reliable. However they are not guaranteed; nor do they form part of an offer or contract. If you require clarification on any points then please contact us, especially if you're traveling some distance to view. Please note that appliances and heating systems have not been tested and therefore no warranties can be given as to their good working order