

FLETCHERS

ESTATE AGENTS



Alkerden Road, W4

£1,200,000

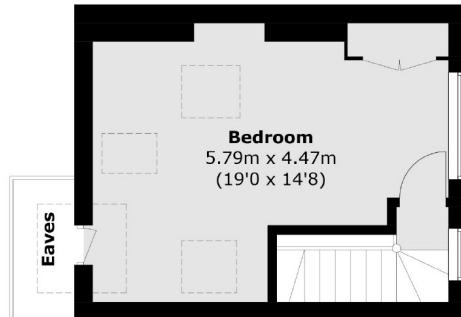
A Victorian three bedroom home offering a double reception with a modern eat in kitchen with doors leading onto a secluded garden. The kitchen has further potential to extend into the side return.

Ideally located just off Chiswick High Road with a fantastic array of boutique shops, cafés and restaurants nearby, as well as transport links at Turnham Green Terrace. The Thames riverside is a short walk to the South.

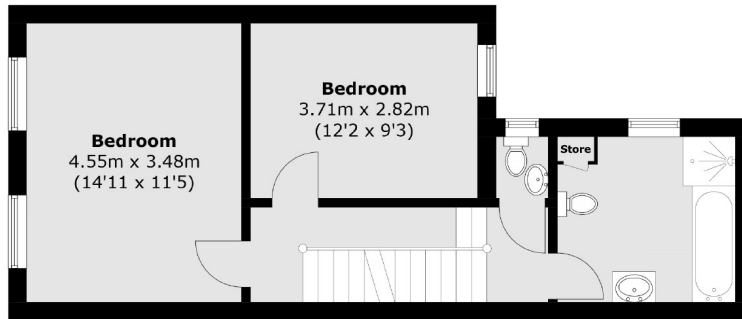
- Three Bedrooms • Eat in Kitchen • Private Garden • Double Reception • Potential to Extend • No Onward Chain •

FLETCHERS

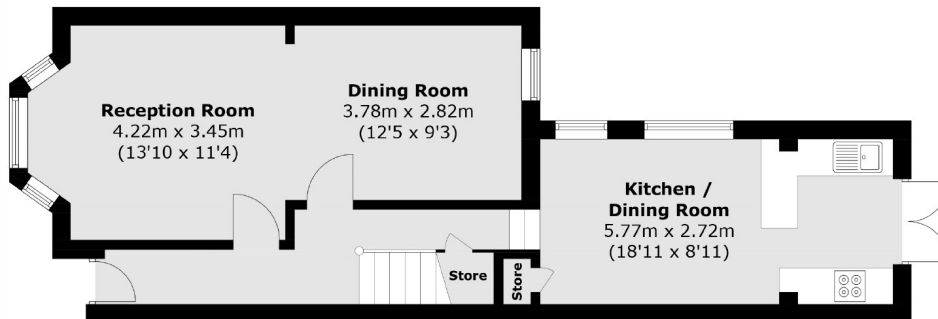
ESTATE AGENTS



Second Floor



First Floor



Ground Floor

Total area (approx.): 123.9 sq. m (1,334 sq. ft)
(Excluding Eaves)

Fletchers Chiswick Turnham Green Sales
58 Turnham Green Terrace, London, W4 1QP
020 8987 3000
chiswicksales@fletcherestates.com

Energy Rating: D. We aim to make our particulars both accurate and reliable. However they are not guaranteed; nor do they form part of an offer or contract. If you require clarification on any points then please contact us, especially if you're traveling some distance to view. Please note that appliances and heating systems have not been tested and therefore no warranties can be given as to their good working order.