

FLETCHERS

ESTATE AGENTS



The Avenue, W4

£1,095,000

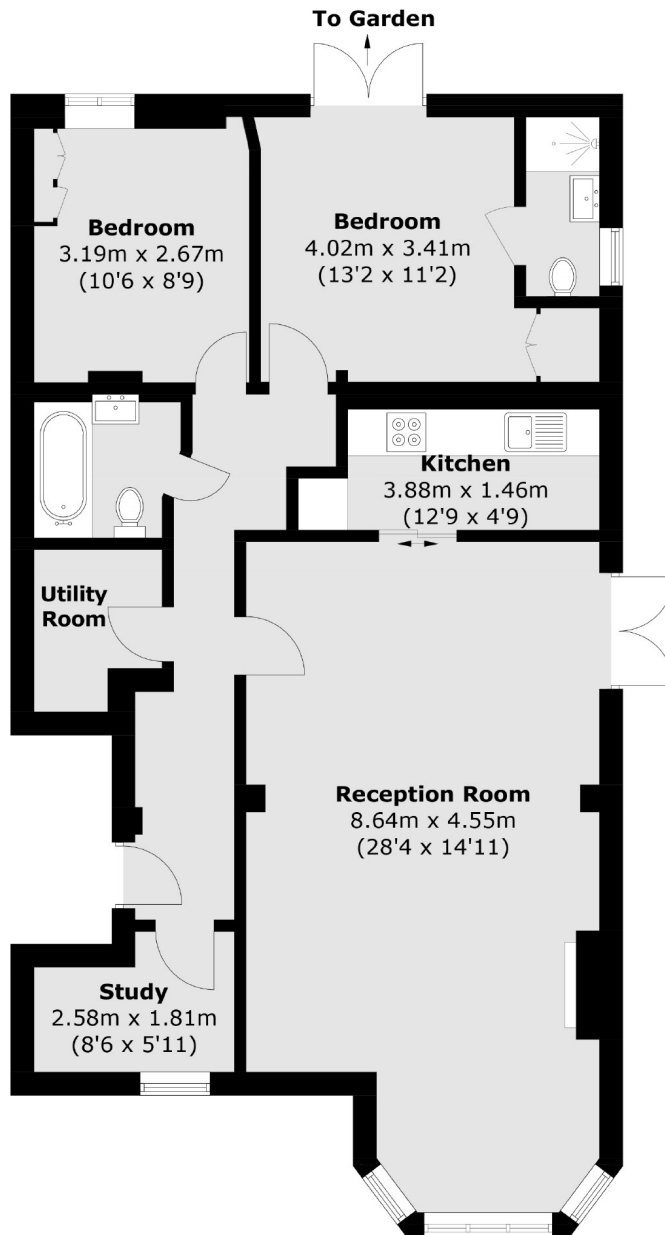
A rare to find, spacious ground floor flat in a sought after Bedford Park location. Completely refurbished throughout with high ceilings and wood flooring. The property benefits from private garden, study room, utility room, and is offered with no onward chain.

The Avenue is a tree lined residential road in the much sought after Bedford Park, with a selection of boutique's, café's and restaurants available locally on Turnham Green Terrace and Chiswick High Road, as well as Turnham Green underground station.

- Bedford Park • No Onward Chain • Private Garden • Two Double Bedrooms • Study Room • Two Bathrooms •

FLETCHERS

ESTATE AGENTS



Total area (approx.): 90.8 sq. m (977.4 sq. ft)

Fletchers Chiswick Turnham Green Sales
58 Turnham Green Terrace, London, W4 1QP
020 8987 3000
chiswicksales@fletcherestates.com

Energy Rating: D. We aim to make our particulars both accurate and reliable. However they are not guaranteed; nor do they form part of an offer or contract. If you require clarification on any points then please contact us, especially if you're traveling some distance to view. Please note that appliances and heating systems have not been tested and therefore no warranties can be given as to their good working order.