

FLETCHERS

ESTATE AGENTS



South Parade, W4

£850,000

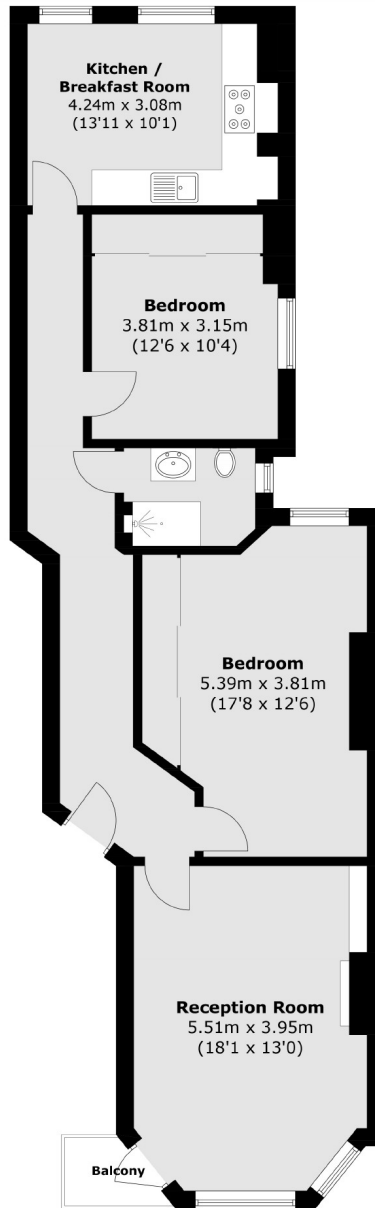
A bright and spacious two bedroom apartment set within a popular red brick mansion block. There is a large separate eat-in kitchen, and a South facing reception room with balcony overlooking the common. Further benefits include a private balcony, communal garden and a share in the freehold.

Centrally located, this property is minutes from Turnham Green and Chiswick Park station with Chiswick's excellent high street with a superb selection of shops, bars and restaurants is on the door step.

- Communal Gardens • Share of Freehold • Private Balcony • Dumbwaiter in Kitchen • Turnham Green Station • Chiswick High Street •

FLETCHERS

ESTATE AGENTS



Total area (approx.): 85.8 sq. m (923.5 sq. ft)
Balcony : 1.6 sq. m (17.2 sq. ft)

Fletchers Chiswick Turnham Green Sales
58 Turnham Green Terrace, London, W4 1QP
020 8987 3000
chiswicksales@fletcherestates.com

Energy Rating: C. We aim to make our particulars both accurate and reliable. However they are not guaranteed; nor do they form part of an offer or contract. If you require clarification on any points then please contact us, especially if you're traveling some distance to view. Please note that appliances and heating systems have not been tested and therefore no warranties can be given as to their good working order.