



Chiswick High Road, W4

£480,000

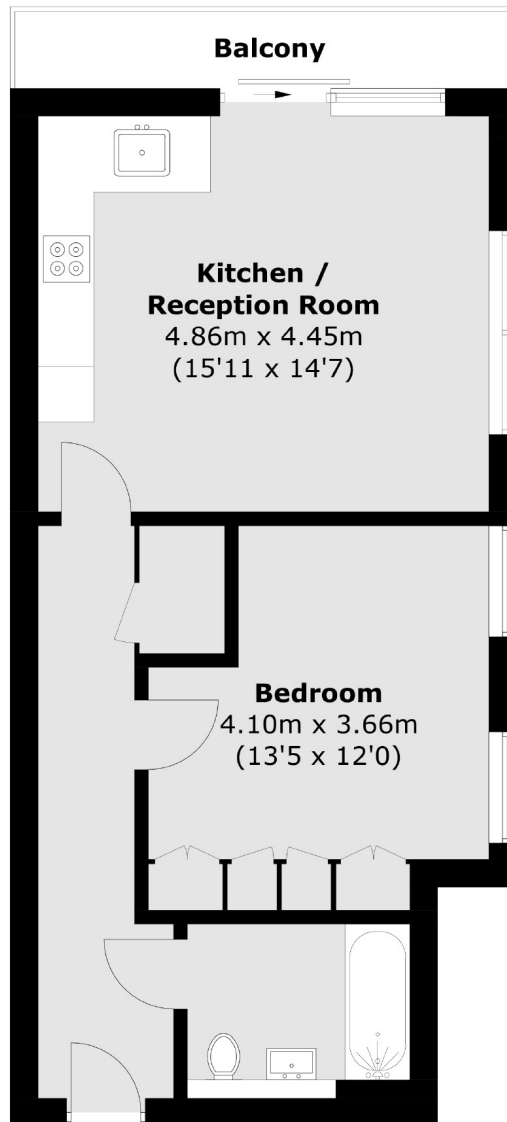
A beautiful penthouse apartment in the heart of Chiswick. This property is flooded with natural light with amazing non restricted views and access a private balcony.

Mortlake House is centrally located in Chiswick and within reach of all of the boutique shops, restaurants and cafés. Chiswick Park station is a short walk as is Turham Green.

- Penthouse Apartment • Lift Serviced • Secure Entry • Private Balcony • City Views • Chiswick High Street •

FLETCHERS

ESTATE AGENTS



Total area (approx.): 49.6 sq. m (533.9 sq. ft)
Balcony area : 4.4 sq. m (47.4 sq. ft)

Fletchers Chiswick Turnham Green Sales
58 Turnham Green Terrace, London, W4 1QP
020 8987 3000
chiswicksales@fletcherestates.com

Energy Rating: B. We aim to make our particulars both accurate and reliable. However they are not guaranteed; nor do they form part of an offer or contract. If you require clarification on any points then please contact us, especially if you're traveling some distance to view. Please note that appliances and heating systems have not been tested and therefore no warranties can be given as to their good working order.