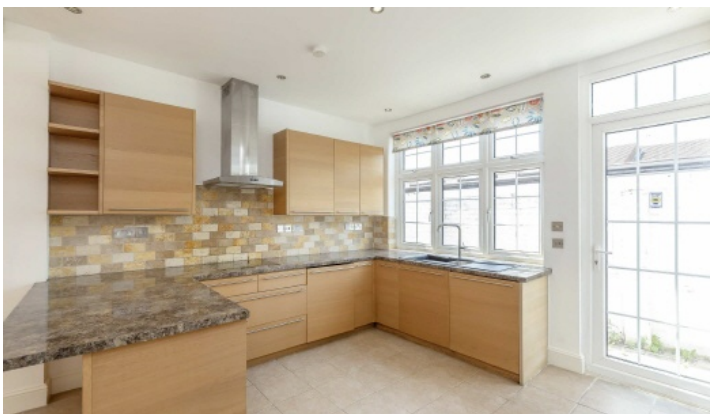


FLETCHERS

ESTATE AGENTS



Rylett Crescent, W12

£1,300,000

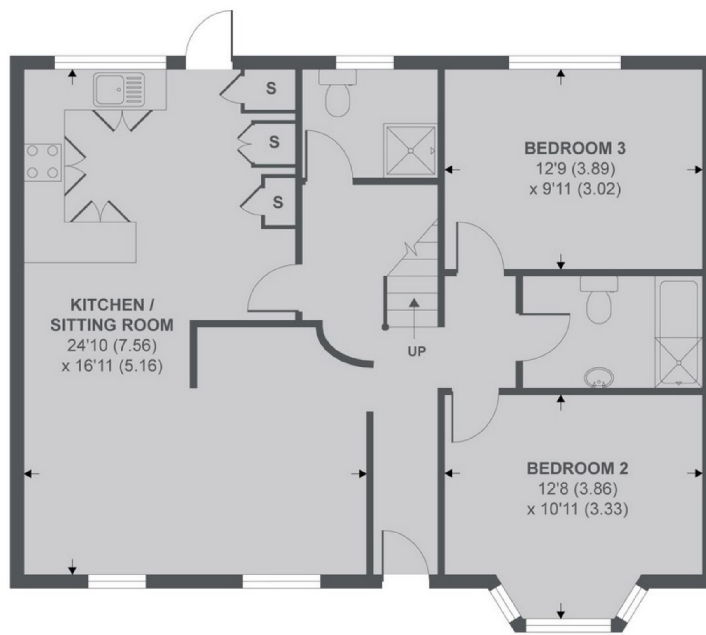
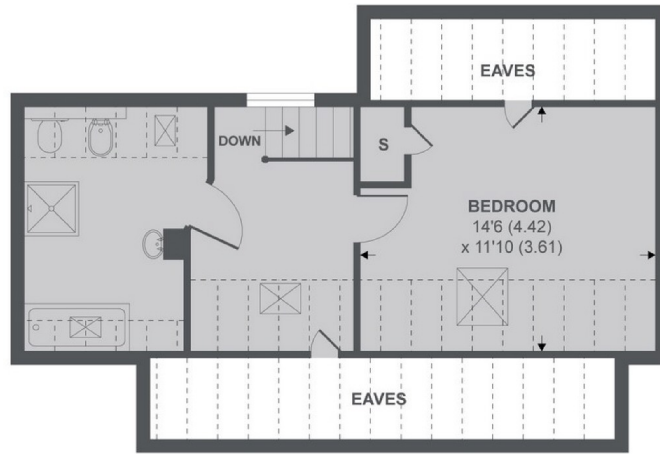
A rare, three bedroom, three bathroom converted bungalow in a sought after location, including superb entertaining space and gated off street parking. There are two ground floor bedrooms, with the third upstairs in the extended loft space, and a paved courtyard garden.

Rylett Crescent is a sought after tree lined turning, ideally placed between the local facilities of Askew Road to the east and the wonderful selection of Boutiques, Independent retailers and High Street Brands along Chiswick High Road to the south. Westfield shopping mall is also only a ten minute bus ride away.

- Rare Bungalow • Three Bedrooms • Three Bathrooms • Courtyard Garden • Open Plan Kitchen/Living • Off Street Parking •

FLETCHERS

ESTATE AGENTS



APPROX FLOOR AREA 1212 SQ.FT 112.6 SQ.M (INCLUDES RESTRICTED HEAD HEIGHT & EXCLUDES EAVES)

Copyright nichecom.co.uk 2019 REF : 487755

Fletchers Chiswick Turnham Green Sales
58 Turnham Green Terrace, London, W4 1QP
020 8987 3000
chiswicksales@fletcherestates.com

Energy Rating: E. We aim to make our particulars both accurate and reliable. However they are not guaranteed; nor do they form part of an offer or contract. If you require clarification on any points then please contact us, especially if you're traveling some distance to view. Please note that appliances and heating systems have not been tested and therefore no warranties can be given as to their good working order.