

FLETCHERS

ESTATE AGENTS



Devonhurst Place, W4

£375,000

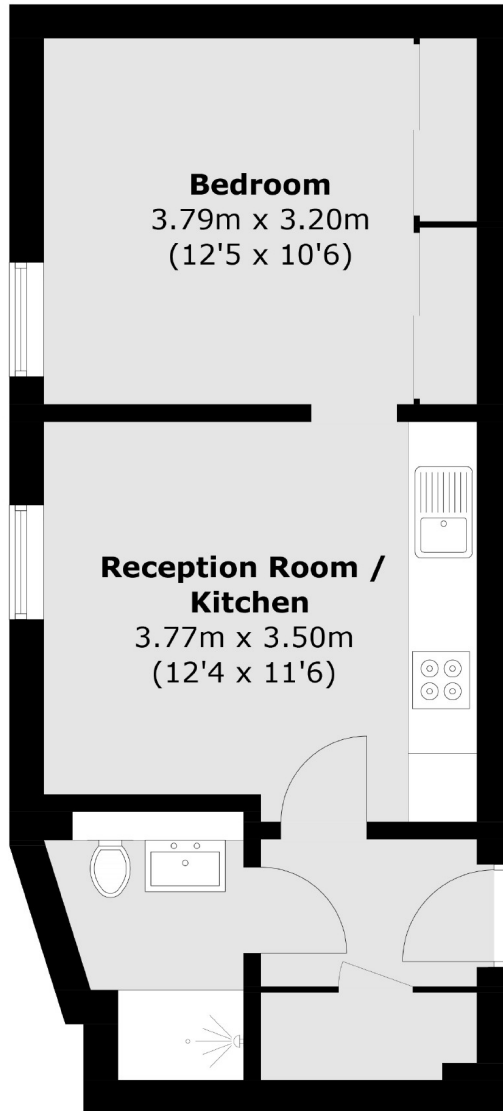
A studio apartment in the heart of Chiswick, perfect for first time buyers or investors. Benefits from lift service and no onward chain.

A fantastic location next to Turnham Green, with an array of shops, restaurants and cafés available on Chiswick High Road, as well as Chiswick Park station.

- Gated Development • No Onward Chain • Lift Service • Secure Entrance • Porter • Chiswick High Street •

FLETCHERS

ESTATE AGENTS



Total area (approx.): 33.9 sq. m (364.9 sq. ft)

Fletchers Chiswick Turnham Green Sales
58 Turnham Green Terrace, London, W4 1QP
020 8987 3000
chiswicksales@fletcherestates.com

Energy Rating: C. We aim to make our particulars both accurate and reliable. However they are not guaranteed; nor do they form part of an offer or contract. If you require clarification on any points then please contact us, especially if you're traveling some distance to view. Please note that appliances and heating systems have not been tested and therefore no warranties can be given as to their good working order.