

FLETCHERS

ESTATE AGENTS



Linden Gardens, W4

£1,500,000

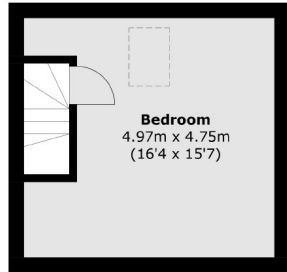
A spacious four storey family home in the heart of Chiswick, offering plenty of entertaining space including a lower ground floor level with flexible use due to having its own entrance. The house comprises of four bedrooms and three bathrooms, with a further WC, and an easy to maintain private garden.

Linden Gardens is a sought after residential enclave with all of the boutiques, cafés and restaurants of Chiswick High Road and Turnham Green on the doorstep. The popular open spaces of Chiswick House and Thames Riverside within a short walk.

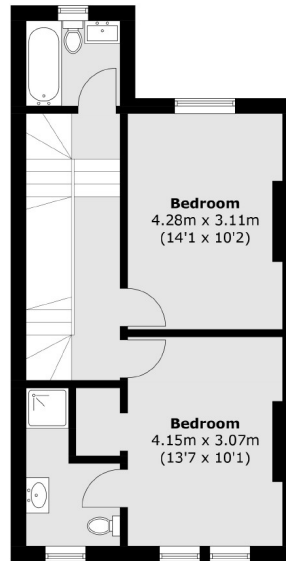
- Offers In Excess Of • Four Bedrooms • Three Bathrooms • Period Features • Two Entrances • Central Location •

FLETCHERS

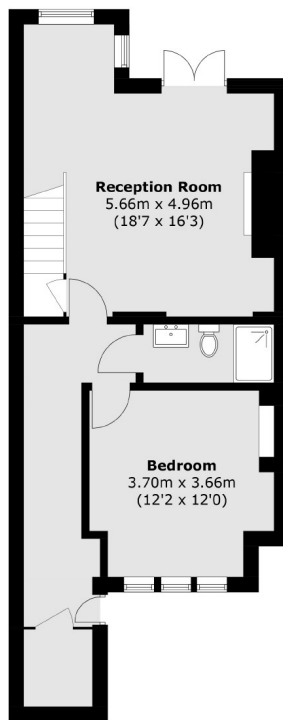
ESTATE AGENTS



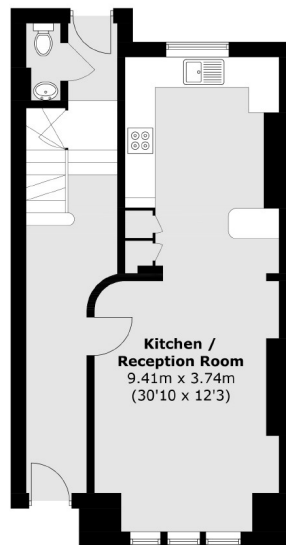
Second Floor



First Floor



Lower Ground Floor



Ground Floor

Total area (approx.): 170.6 sq. m (1,836.2 sq. ft)

Fletchers Chiswick Turnham Green Sales
58 Turnham Green Terrace, London, W4 1QP
020 8987 3000
chiswicksales@fletcherestates.com

Energy Rating: D. We aim to make our particulars both accurate and reliable. However they are not guaranteed; nor do they form part of an offer or contract. If you require clarification on any points then please contact us, especially if you're traveling some distance to view. Please note that appliances and heating systems have not been tested and therefore no warranties can be given as to their good working order.