

FLETCHERS

ESTATE AGENTS



Palladian Gardens, W4

£177,750

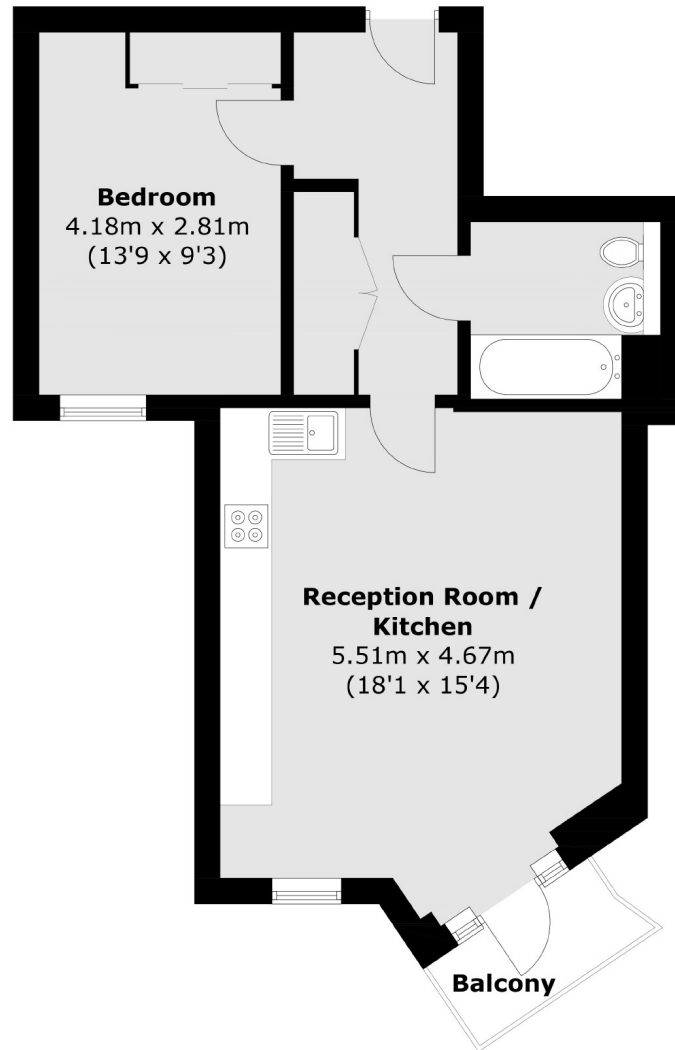
45% Shared Ownership - This immaculately presented modern apartment benefits from underground parking, a concierge and a private balcony. Set in a stunning gated development this property benefits from access to a stunning secluded courtyard. The apartment has a spacious feel throughout with a generous entertaining space.

Cherry Blossom Court is only a short walk from riverside walks on the Thames Path and has immediate access to Chiswick House and Grounds. Chiswick High Road is also within reach with a fantastic selection of High Street Brands, restaurants and boutiques with Turnham Green Station just beyond.

- Shared Ownership • Concierge • Underground Parking • Balcony • Lift • Secluded Courtyard •

FLETCHERS

ESTATE AGENTS



Total area (approx.): 51.0 sq. m (548.9 sq. ft)
Balcony area : 2.5 sq. m (26.9 sq. ft)

Fletchers Chiswick Turnham Green Sales
58 Turnham Green Terrace, London, W4 1QP
020 8987 3000
chiswicksales@fletcherestates.com

Energy Rating: B. We aim to make our particulars both accurate and reliable. However they are not guaranteed; nor do they form part of an offer or contract. If you require clarification on any points then please contact us, especially if you're traveling some distance to view. Please note that appliances and heating systems have not been tested and therefore no warranties can be given as to their good working order.