



Arnott Close, W4

£925,000

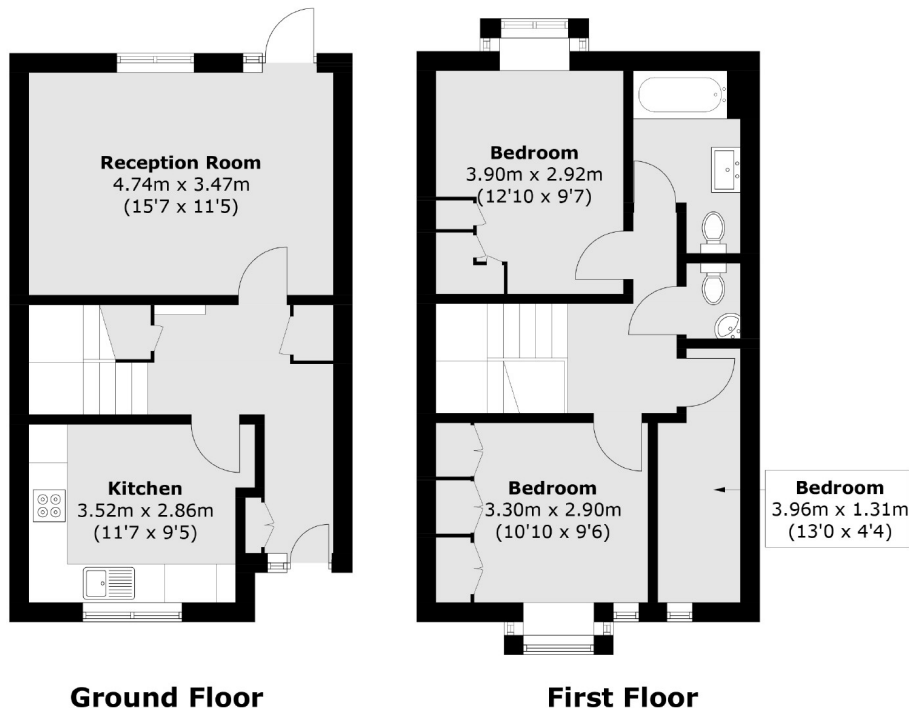
In this peaceful cul-de-sac only moments from Chiswick High Road. A superbly maintained and presented three bedroom modern town house, with a lovely sunny garden and residents parking. Highly regarded Belmont Primary School is also within very easy reach.

Arnott Close is in a Prime location, with immediate access to the High Street with the wonderful selection of High Street brands, Gastro Pubs and supermarkets, and is an easy walk to Turnham Green tube station.

- Two Double Bedrooms • Study/Home Office • Bathroom/Guest WC • Fitted and Equipped Kitchen • Private Garden • Close to Belmont Primary •

FLETCHERS

ESTATE AGENTS



Total area (approx.): 77.5 sq. m (834.1 sq. ft)

Fletchers Chiswick Turnham Green Sales
58 Turnham Green Terrace, London, W4 1QP
020 8987 3000
chiswicksales@fletcherestates.com

Energy Rating: . We aim to make our particulars both accurate and reliable. However they are not guaranteed; nor do they form part of an offer or contract. If you require clarification on any points then please contact us, especially if you're traveling some distance to view. Please note that appliances and heating systems have not been tested and therefore no warranties can be given as to their good working order.