

FLETCHERS

ESTATE AGENTS



Hartwood Gardens, W12

£1,575,000

A spacious five bedroom family home in a secluded sought after location. The house has fantastic width with a 22 foot wide reception and master bedroom, a home office on the ground floor, and a West facing garden. Additionally, a garage and a private off street parking space are included.

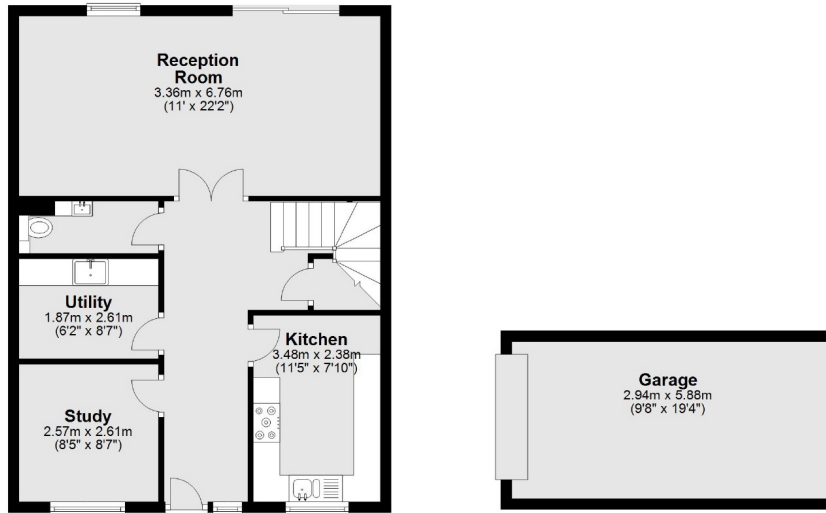
Hartwood Gardens is a private road, tucked away of Hartwood Road in a quiet residential area. Within reach of Chiswick and Turnham Green which offer a superb selection of high street and boutique shops and restaurants. Stamford Brook station is a short walk as is the popular Ravenscourt Park.

- Five Bedroom Home • Two Bathrooms • Office • Separate Kitchen • West Facing Garden • Garage and Parking Space •

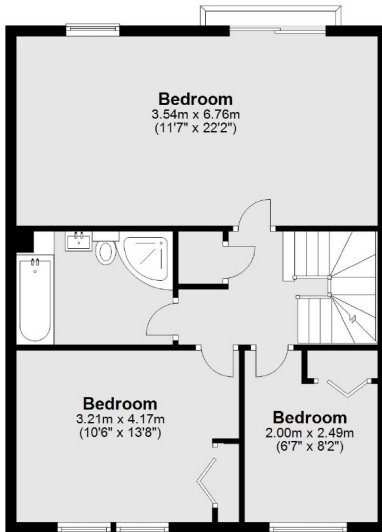
FLETCHERS

ESTATE AGENTS

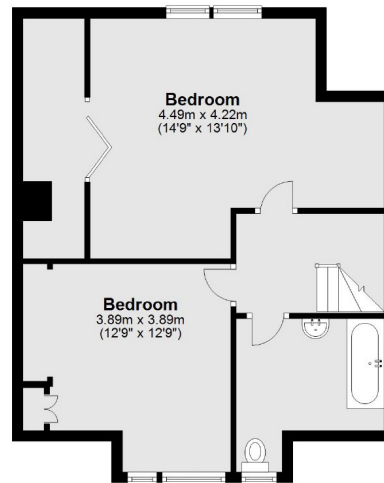
Ground Floor



First Floor



Second Floor



Main area: Approx. 175.0 sq. metres (1883.2 sq. feet)
Plus garage, approx. 17.3 sq. metres (185.8 sq. feet)

Fletchers Chiswick High Road Sales
86 Chiswick High Road, Chiswick, London, W4 1SY
020 8987 3000
chiswicksales@fletcherestates.com

Energy Rating: C. We aim to make our particulars both accurate and reliable. However they are not guaranteed; nor do they form part of an offer or contract. If you require clarification on any points then please contact us, especially if you're traveling some distance to view. Please note that appliances and heating systems have not been tested and therefore no warranties can be given as to their good working order.