



## Palladian Gardens, W4

£395,000

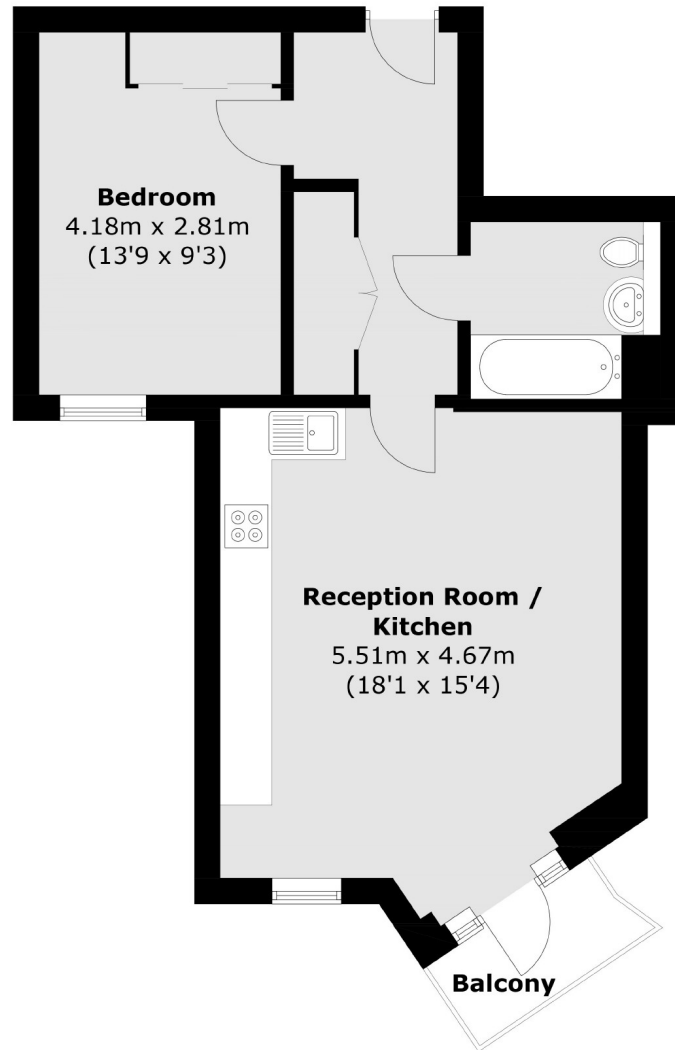
A luxury and superbly presented one bedroom apartment in this secure gated development with on-site concierge and underground parking. Finished to an impressive standard with lovely entertaining areas and a secluded courtyard garden. Shared ownership also available.

Cherry Blossom Court is only a short walk from riverside walks on the Thames Path and has immediate access to Chiswick House and Grounds. Chiswick High Road is also within reach with a fantastic selection of High Street Brands, restaurants and boutiques with Turnham Green Station just beyond.

- Private Balcony • Lift Serviced • Secluded Courtyard Garden • Underground Parking • On-Site Concierge •

# FLETCHERS

ESTATE AGENTS



Total area (approx.): 51.0 sq. m (548.9 sq. ft)  
Balcony area : 2.5 sq. m (26.9 sq. ft)

Fletchers Chiswick Turnham Green Sales  
58 Turnham Green Terrace, London, W4 1QP  
020 8987 3000  
chiswicksales@fletcherestates.com

Energy Rating: B. We aim to make our particulars both accurate and reliable. However they are not guaranteed; nor do they form part of an offer or contract. If you require clarification on any points then please contact us, especially if you're traveling some distance to view. Please note that appliances and heating systems have not been tested and therefore no warranties can be given as to their good working order.