

FLETCHERS

ESTATE AGENTS



Evelyn Road, W4

£600,000

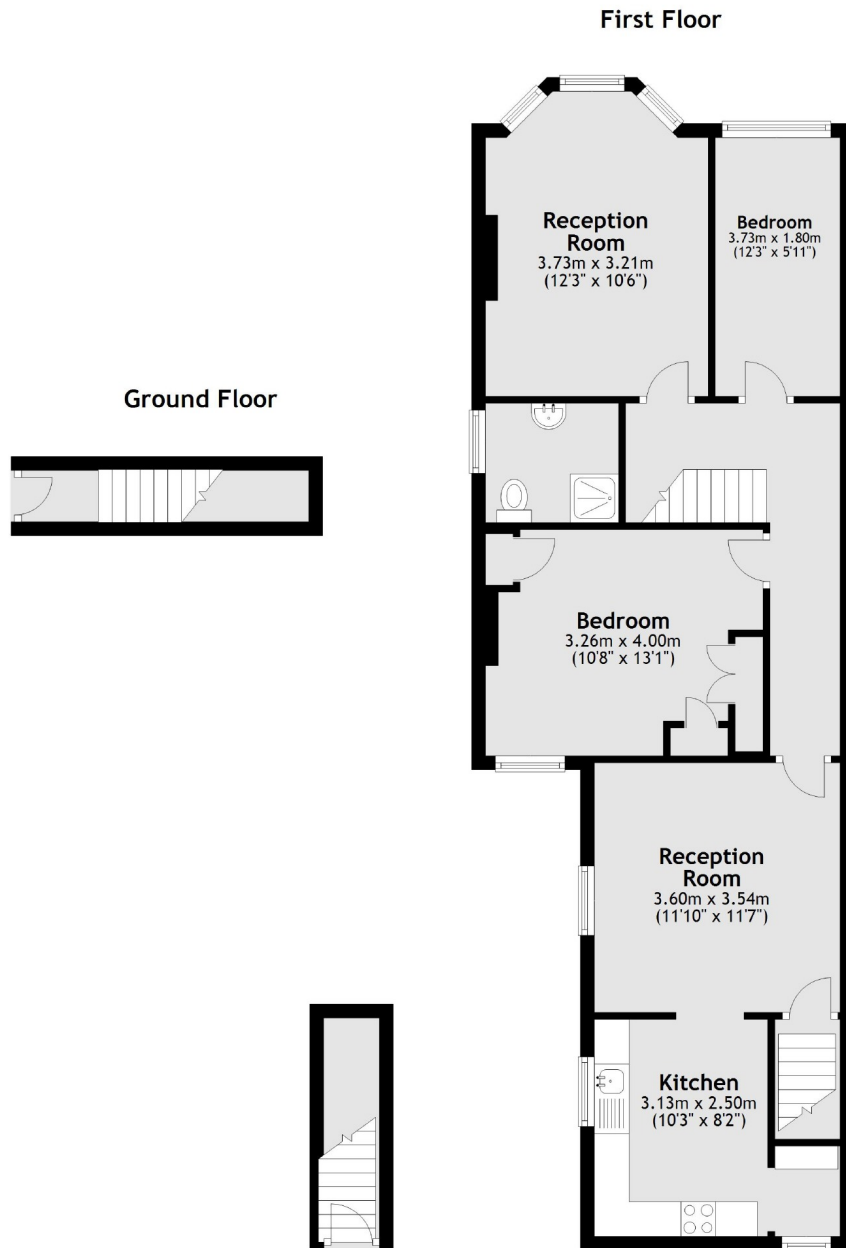
A spacious first floor Victorian maisonette with flexible living space and private garden. The property benefits from a private entrance, separate kitchen and two reception rooms, one of which could be used as a third bedroom.

Evelyn Road is within a quarter of a mile of Chiswick Park tube station and an easy walk down to Chiswick High Road with plenty of local amenities on the doorstep. Also provides easy access in and out of London via the A4.

- Two Bedrooms • Two Reception Rooms • Victorian Features • Own Entrance • Private Garden • No Onward Chain •

FLETCHERS

ESTATE AGENTS



Total area: approx. 76.8 sq. metres (826.7 sq. feet)

Fletchers Chiswick Turnham Green Sales
58 Turnham Green Terrace, London, W4 1QP
020 8987 3000
chiswicksales@fletcherestates.com

Energy Rating: D. We aim to make our particulars both accurate and reliable. However they are not guaranteed; nor do they form part of an offer or contract. If you require clarification on any points then please contact us, especially if you're traveling some distance to view. Please note that appliances and heating systems have not been tested and therefore no warranties can be given as to their good working order.