

FLETCHERS

ESTATE AGENTS



Chatsworth Road, W4

£1,600,000

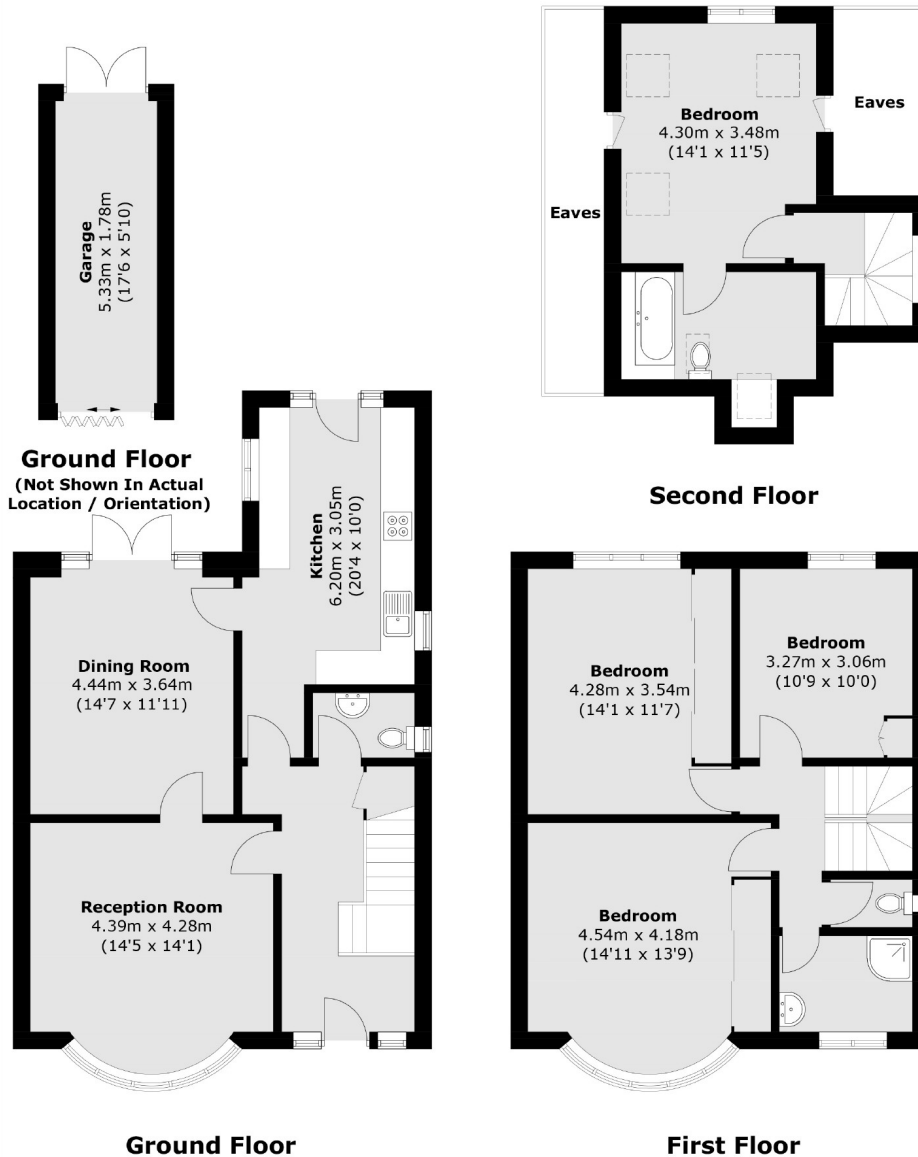
A rare opportunity to own a four bedroom detached house in Grove Park. This home offers off-street parking and a fantastic South-East facing garden in excess of 100ft. The house has been well looked after and has potential to extend.

Chatsworth Road is a residential road in close proximity to Chiswick House and Gardens, in the desirable Grove Park area. Chiswick Overground station is a very short walk and the Thames is within half a mile.

- Detached House • No Onward Chain • Off Street Parking • Private Garage • Potential To Extend • Large Garden •

FLETCHERS

ESTATE AGENTS



Total area (approx.): 148.7 sq. m (1,600.4 sq. ft)
Garage: 10.1 sq. m (108.7 sq. ft)
(Excluding Eaves)

Fletchers Chiswick Turnham Green Sales
58 Turnham Green Terrace, London, W4 1QP
020 8987 3000
chiswicksales@fletcherestates.com

Energy Rating: E. We aim to make our particulars both accurate and reliable. However they are not guaranteed; nor do they form part of an offer or contract. If you require clarification on any points then please contact us, especially if you're traveling some distance to view. Please note that appliances and heating systems have not been tested and therefore no warranties can be given as to their good working order.