

FLETCHERS

ESTATE AGENTS



Lower Mall, W6

£1,175,000

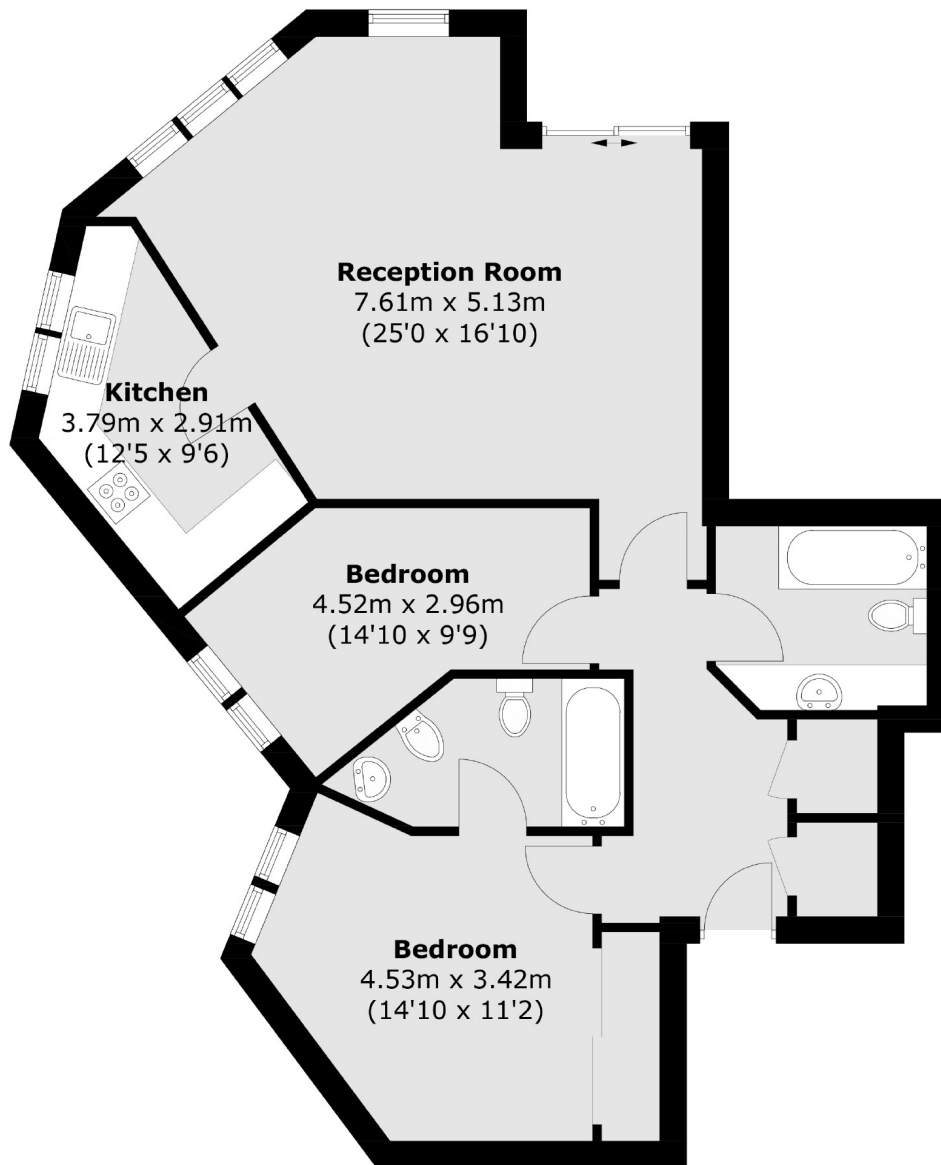
A ground floor two bedroom apartment with amazing river views, private garden, generous reception room which leads to a separate kitchen with plenty of natural light.

Blades Court is perfectly positioned on the bend of the River Thames, for optimum views both up and down stream. Also within a short walk of the heart of Hammersmith Broadway, serviced by four tube lines and many excellent local restaurants and shops.

- River Views • Two Bedrooms • Two Bathrooms • Share Of Freehold • Private Garden • Allocated Gated Parking •

FLETCHERS

ESTATE AGENTS



Total area (approx.): 82.6 sq. m (889.0 sq. ft)

Fletchers Chiswick Turnham Green Sales
58 Turnham Green Terrace, London, W4 1QP
020 8987 3000
chiswicksales@fletcherestates.com

Energy Rating: C. We aim to make our particulars both accurate and reliable. However they are not guaranteed; nor do they form part of an offer or contract. If you require clarification on any points then please contact us, especially if you're traveling some distance to view. Please note that appliances and heating systems have not been tested and therefore no warranties can be given as to their good working order.