

# FLETCHERS

ESTATE AGENTS



## Thorney Hedge Road, W4

£1,200,000

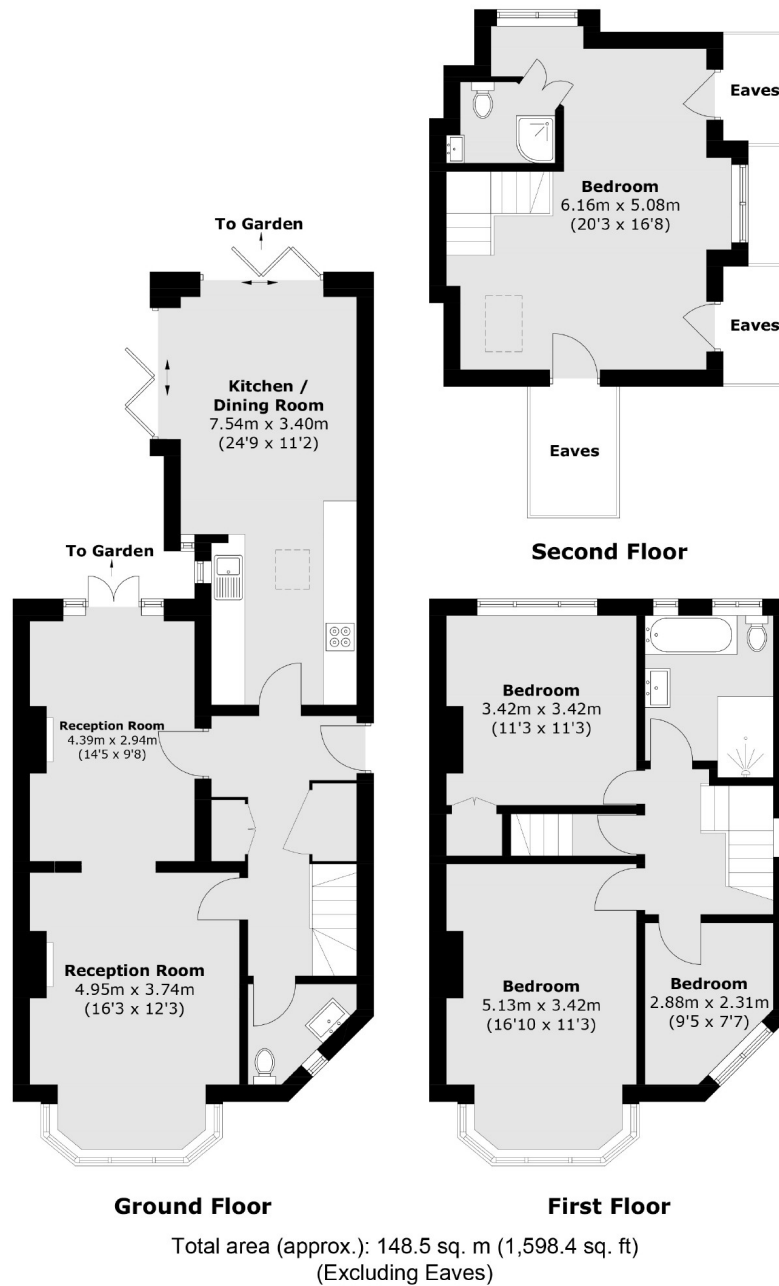
A four bedroom end of terrace home, with a generous living space with two sets of bi folding doors leading to a westerly facing garden with the benefit of no onward chain and off street parking.

Thorney Hedge road is nestled on a quiet residential tree lined road with Gunnersbury station on the doorstep. There are plenty of independent shops, bars and restaurants on the popular Chiswick High Road and Turnham Green.

• Freehold House • End of Terrace • Westerly Facing Garden • Off Street Parking • No Onward Chain • Approx 1,686 sq ft •

# FLETCHERS

ESTATE AGENTS



Fletchers Chiswick Turnham Green Sales  
58 Turnham Green Terrace, London, W4 1QP  
020 8987 3000  
chiswicksales@fletcherestates.com

Energy Rating: D. We aim to make our particulars both accurate and reliable. However they are not guaranteed; nor do they form part of an offer or contract. If you require clarification on any points then please contact us, especially if you're traveling some distance to view. Please note that appliances and heating systems have not been tested and therefore no warranties can be given as to their good working order.