

FLETCHERS

ESTATE AGENTS



Hauteville Court Gardens, W6

£650,000

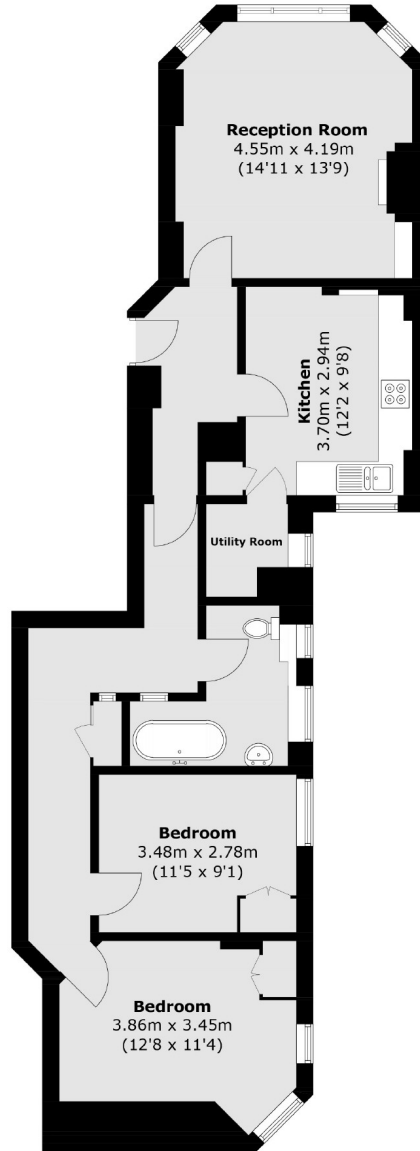
A two bedroom ground floor apartment within an attractive red brick mansion block, with open views over Stamford Brook Common. The flat has retained original features in fantastic condition, has high ceilings and a large reception room separate to the eat in kitchen. There is access to a shared garden to the rear, and a share in the freehold.

Positioned between Chiswick and Hammersmith, within easy reach of the popular Chiswick High Road and Turnham Green Terrace offering a fantastic array of amenities. Stamford Brook tube station is a very short walk, as well as the green spaces of Ravenscourt Park.

- Two Double Bedrooms
- Ground Floor Flat
- Shared Garden
- Large Reception Room
- Original Features
- Share of Freehold

FLETCHERS

ESTATE AGENTS



Total area (approx.): 83.5 sq. m (898.8 sq. ft)

Fletchers Chiswick Turnham Green Sales
58 Turnham Green Terrace, London, W4 1QP
020 8987 3000
chiswicksales@fletcherestates.com

Energy Rating: D. We aim to make our particulars both accurate and reliable. However they are not guaranteed; nor do they form part of an offer or contract. If you require clarification on any points then please contact us, especially if you're traveling some distance to view. Please note that appliances and heating systems have not been tested and therefore no warranties can be given as to their good working order.