

FLETCHERS

ESTATE AGENTS



Bennett Street, W4

£399,000

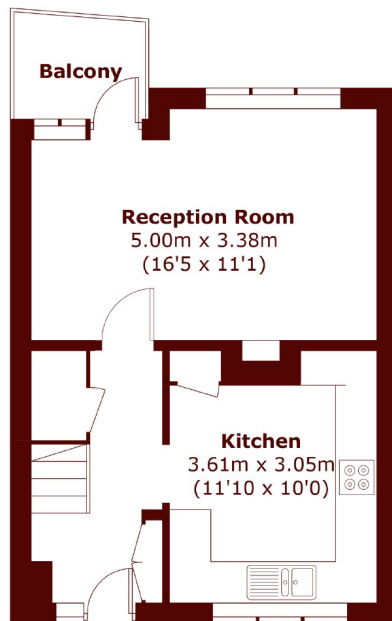
A large two double bedroom flat that is laid out over two floors. The property has a separate kitchen to the spacious reception room and also has access to communal gardens.

Hamilton House is perfectly located for the amenities of Chiswick High Road, the property is located less than half a mile from the High Road and Turnham Green Tube Station (District & Piccadilly)

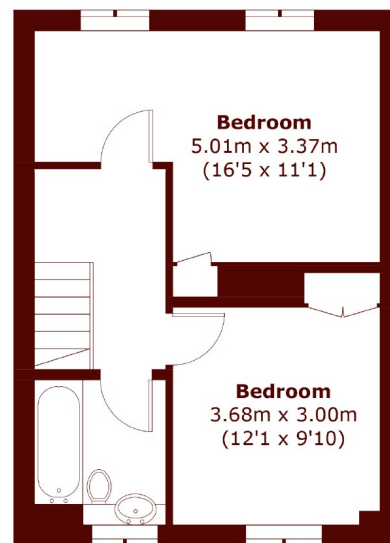
- Two Double Bedrooms • Large Reception • Separate Kitchen • Split Level • Communal Garden • Central Location •

FLETCHERS

ESTATE AGENTS



Third Floor



Fourth Floor

Total area (approx.): 70.8 sq. m (762.1 sq. ft)
Balcony area (approx.): 2.8 sq. m (30.1 sq. ft)

Fletchers Chiswick Turnham Green Sales
58 Turnham Green Terrace, London, W4 1QP
020 8987 3000
chiswicksales@fletcherestates.com

Energy Rating: D. We aim to make our particulars both accurate and reliable. However they are not guaranteed; nor do they form part of an offer or contract. If you require clarification on any points then please contact us, especially if you're traveling some distance to view. Please note that appliances and heating systems have not been tested and therefore no warranties can be given as to their good working order.