

FLETCHERS

ESTATE AGENTS



Cambridge Road North, W4

£725,000

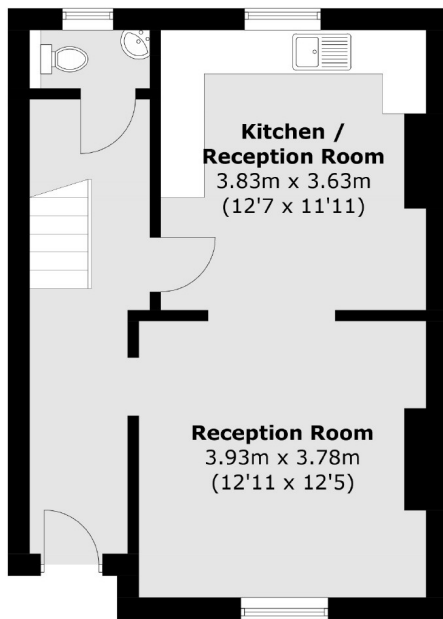
A charming three bedroom maisonette accessed by its own private entrance and occupying the top two floors of an attractive period home. The raised ground floor has a large open-plan reception space with an eat-in kitchen, WC, period features and high ceilings throughout. Upstairs three bedrooms are accompanied by a family bathroom. A spacious private garden accessed via the side gate is also included.

Located on a residential cul de sac just off Chiswick High Road with easy access to the fabulous selection of Chiswick amenities, including transport at Gunnersbury and Chiswick Park Stations and A4/M4 by car.

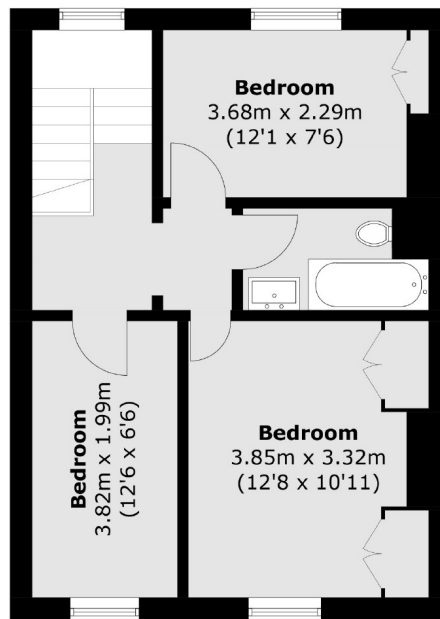
- Three Bedrooms • Family Bathroom • Kitchen/Diner • Guest WC • Private Garden • Private Entrance •

FLETCHERS

ESTATE AGENTS



Ground Floor



First Floor

Total area (approx.): 84.2 sq. m (906.3 sq. ft)

Fletchers Chiswick Turnham Green Sales
58 Turnham Green Terrace, London, W4 1QP
020 8987 3000
chiswicksales@fletcherestates.com

Energy Rating: D. We aim to make our particulars both accurate and reliable. However they are not guaranteed; nor do they form part of an offer or contract. If you require clarification on any points then please contact us, especially if you're traveling some distance to view. Please note that appliances and heating systems have not been tested and therefore no warranties can be given as to their good working order.