

FLETCHERS

ESTATE AGENTS



Grantham Road, W4

£1,350,000

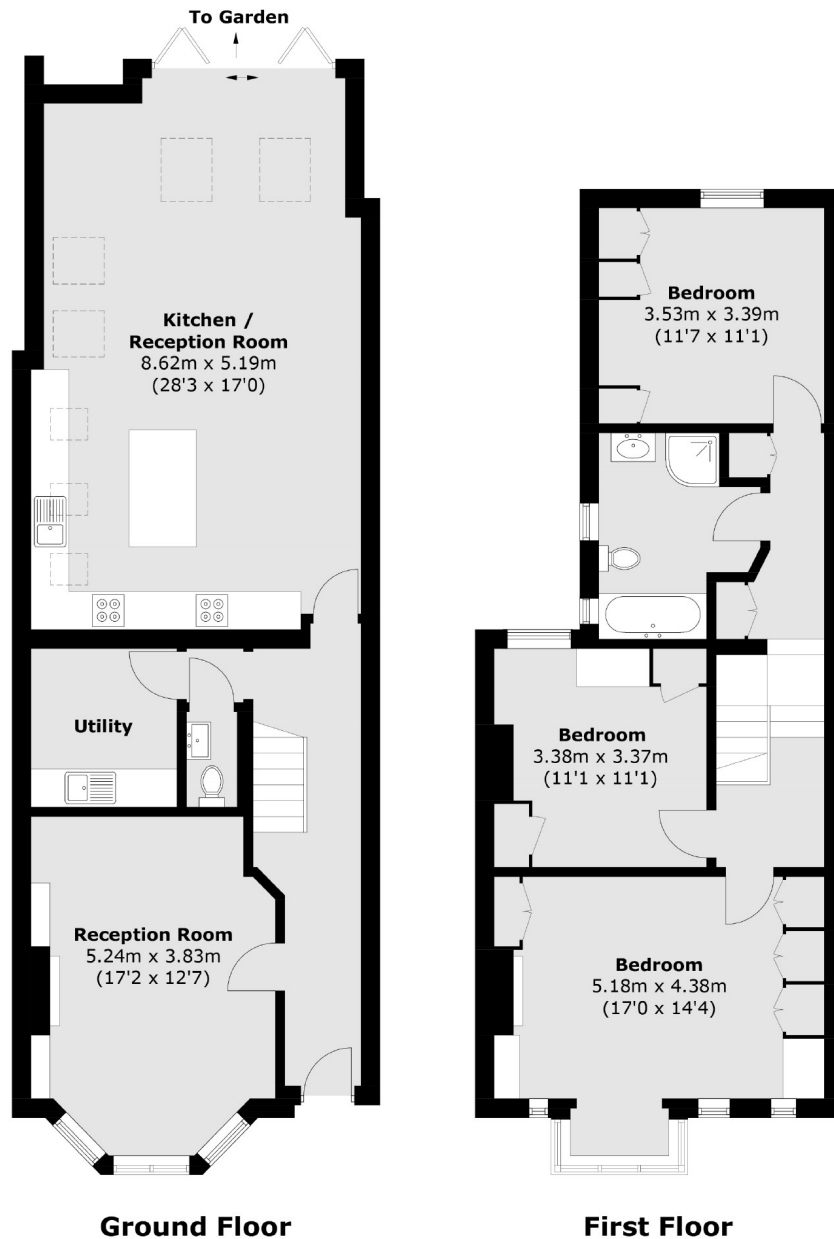
A three bedroom family home that offers fantastic living space and further potential for growth into the loft. The bright, open plan kitchen/dining family room is perfect for entertaining, with a further separate reception room and a private garden.

Within a short walk of the green spaces of Chiswick House and Grounds, and beyond to Chiswick High Road which offers superb selection of shops and restaurants. The Thames is to the South just 0.2 miles away.

- No Onward Chain • Three Double Bedrooms • Private Garden • Extended Kitchen Dinner • Potential to Extend into the Loft • Off Street Parking •

FLETCHERS

ESTATE AGENTS



Total area (approx.): 146.9 sq. m (1,581.2 sq. ft)

Fletchers Chiswick Turnham Green Sales
58 Turnham Green Terrace, London, W4 1QP
020 8987 3000
chiswicksales@fletcherestates.com

Energy Rating: C. We aim to make our particulars both accurate and reliable. However they are not guaranteed; nor do they form part of an offer or contract. If you require clarification on any points then please contact us, especially if you're traveling some distance to view. Please note that appliances and heating systems have not been tested and therefore no warranties can be given as to their good working order.