

FLETCHERS

ESTATE AGENTS



Watchfield Court, W4

£425,000

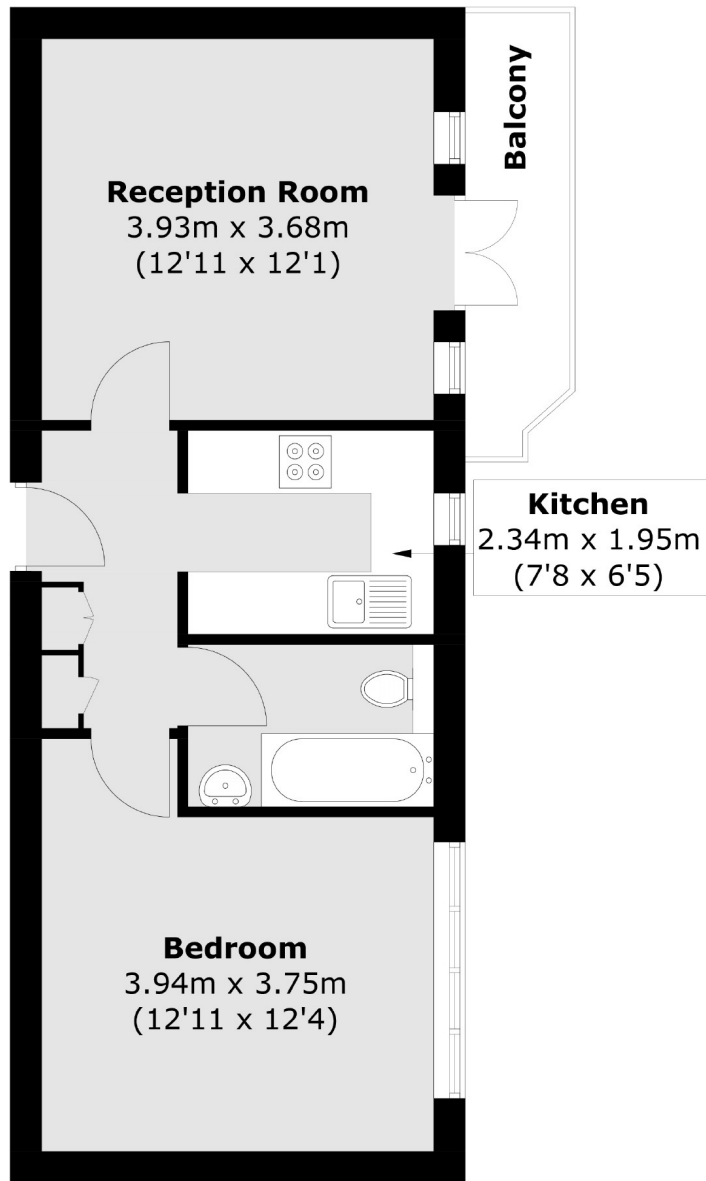
A one bedroom apartment set within this popular mansion block, offering well proportioned rooms, a separate kitchen and a private balcony overlooking communal gardens.

Watchfield Court is very conveniently located just South of Turnham Green and Chiswick High Road, with a fantastic selection of boutique shops and independent restaurants nearby. Chiswick Park station is a short walk.

- Communal Gardens • Private Balcony • Secure Entrance • No Onward Chain • Lift Serviced • Chiswick Park Station •

FLETCHERS

ESTATE AGENTS



Total area (approx.): 40.3 sq. m (433.7 sq. ft)
Balcony area : 4.0 sq. m (43.0 sq. ft)

Fletchers Chiswick Turnham Green Sales
58 Turnham Green Terrace, London, W4 1QP
020 8987 3000
chiswicksales@fletcherestates.com

Energy Rating: C. We aim to make our particulars both accurate and reliable. However they are not guaranteed; nor do they form part of an offer or contract. If you require clarification on any points then please contact us, especially if you're traveling some distance to view. Please note that appliances and heating systems have not been tested and therefore no warranties can be given as to their good working order.