

# FLETCHERS

ESTATE AGENTS



## Beaumont Road, W4

£600,000

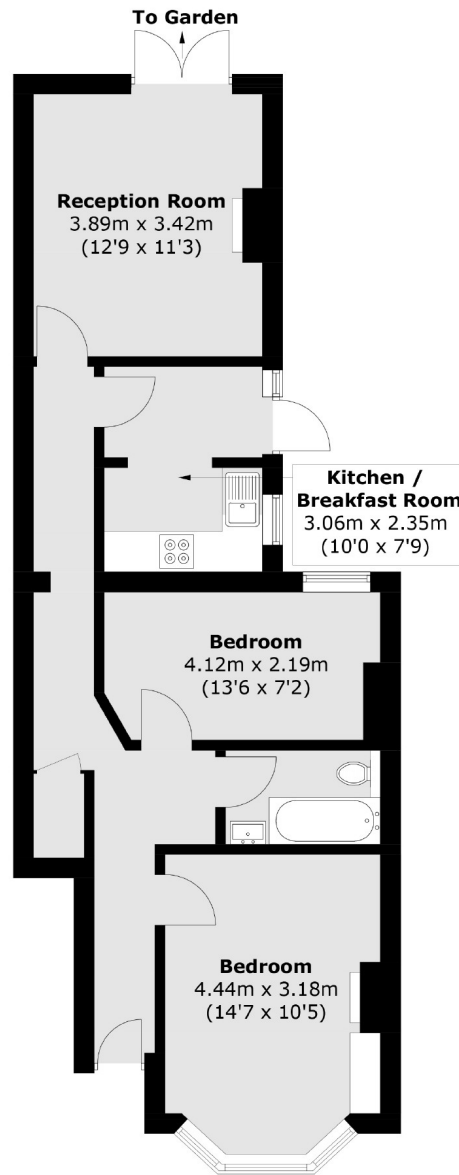
A two bedroom maisonette within a Victorian house with a separate reception room, a kitchen/breakfast room with access to a private garden. Offered with no onward chain.

Beaumont Road is a quiet tree lined residential road only a third of a mile away from Chiswick Park Underground station and the excellent restaurants, cafes and shops along the high road.

- Share Of Freehold • Private Entrance • Two Double Bedrooms • Kitchen/Breakfast Room • Private Garden • No Onward Chain •

# FLETCHERS

ESTATE AGENTS



Total area (approx.): 62.3 sq. m (670.6 sq. ft)

Fletchers Chiswick Turnham Green Sales  
58 Turnham Green Terrace, London, W4 1QP  
020 8987 3000  
[chiswicksales@fletcherestates.com](mailto:chiswicksales@fletcherestates.com)

Energy Rating: D. We aim to make our particulars both accurate and reliable. However they are not guaranteed; nor do they form part of an offer or contract. If you require clarification on any points then please contact us, especially if you're traveling some distance to view. Please note that appliances and heating systems have not been tested and therefore no warranties can be given as to their good working order.